

One Bedroom Apartments Near University in Kalkanli

Kalkanli, Guzelyurt, North Cyprus

- Property Ref: 149
- One bedroom apartments right next to METU University one of the most prestigious universities in North Cyprus
- A great investment opportunity for a steady passive income
- Close to all necessities, including supermarkets and pharmacies
- High quality materials and workmanship
- Rental management option available

£70,000



76 m² to 95 m²



1 Bedroom



1 Bathroom

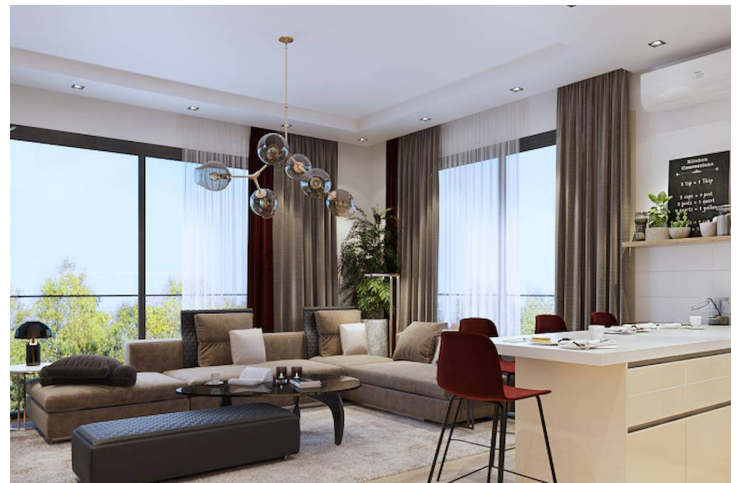


October 2022 Completion



One Bedroom Apartments Near University in Kalkanli

Interior Images



One Bedroom Apartments Near University in Kalkanli

Floor Plan



B BLOK
TIP KAT PLANI

Facilities



Lift



Parking



Shops



Site Plan

Kalkanli, Guzelyurt, North Cyprus

Mandarin



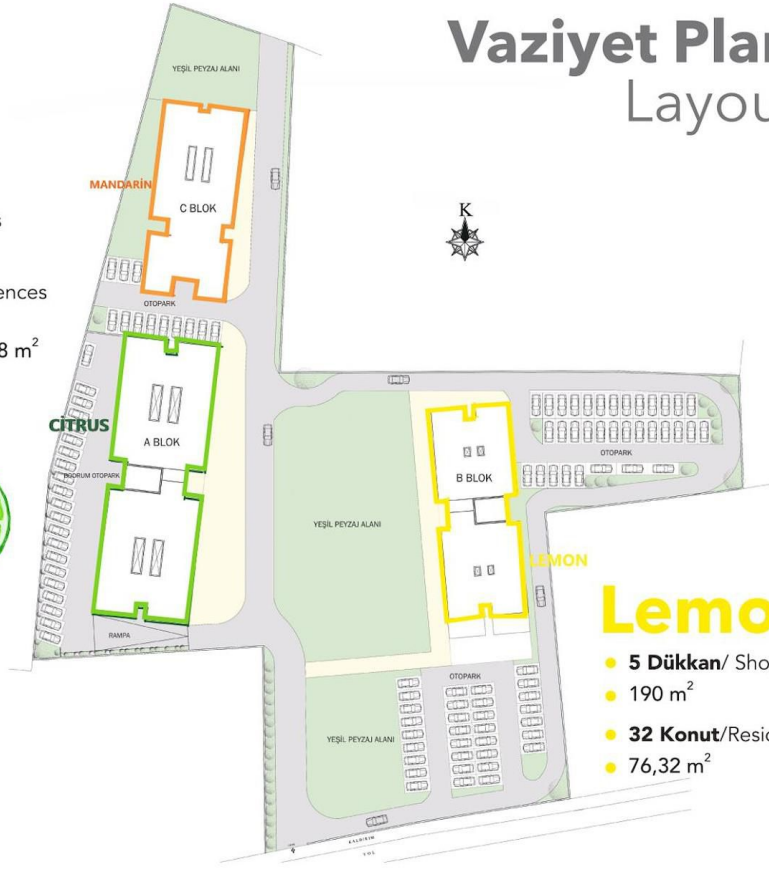
- 4 Dükkan/ Shops
- 76 m²-256 m²
- 24 Konut/ Residences
- 93 m²
67,5 m² + Teras: 28 m²

Citrus



- 3 Dükkan/ Shops
- 440 m²-890 m²
- 32 Konut/ Residences
- 114,5 m²

Vaziyet Planı Layout Plan



Lemon



- 5 Dükkan/ Shops
- 190 m²
- 32 Konut/Residences
- 76,32 m²

Project Location

This project is located in **Kalkanli** in the region of Guzelyurt. The area of Guzelyurt and surrounding villages are well known in North Cyprus for their green landscapes. This area is where the majority of the country's oranges and other citrus fruit are grown, in the spring as you enter the town you are hit by the scent of orange blossoms.

Once a year they hold a **Citrus Festival**, where you can go buy the local produce and get a taste of local Cypriot food and drink.



Pharmacy	3 mins	Aphrodite Beach Club	20 mins
Restaurants & Cafes	5 mins	Lefke European University	27 mins
Supermarket	8 mins	Nicosia Capital City	35 mins
Guzelyurt Town Center	10 mins	Ercan Airport	60 mins
Guzelyurt Hospital	12 mins		

About the Project

This three-block project is located in the heart of Guzelyurt in North Cyprus, it's situated right next to the Middle Easter Technical University, one of the most prestigious universities in Turkey and North Cyprus.

Due to the increase in the number of students in this area, there is a constant demand for student housing and apartments.

Therefore the price of real estate in this area is gaining popularity and value with each day.

METU has been active in Guzelyurt for about 14 years and has been supporting the area with its student population of about 3200. The university's student capacity in its own dorm facilities is around 1600. The university students who are not in this narrow range are currently benefitting from the flats and other properties in the area.

This project is a great investment opportunity for anyone looking to earn a passive income. As the developer will also provide you with rental management for the units.



One Bedroom Apartments Near University in Kalkanli

Construction Status

November 2024



July 2023



Payment Plan For This Property Type

Property Info

Type

1 Bedroom Apartment

No

5

Block

Lemon

Floor

1

Interior

72.82 m²

Balcony Terrace

3.50 m²

Total Living Space

76.32 m²



Payment Plan For This Property Type

Payment Plan

Current Date	Start Date	Delivery Date	Price	Initial Payment Amount
May 2025	January 2021	October 2022	£70,000	£70,000 <div>100%</div>

