



## Studio Apartment near Long Beach

Long Beach, Iskele Long Beach, North Cyprus

- Property Ref: 1693
- Walking distance to the popular Long Beach.
- Hotel facilities and management.
- Payment in installments after receiving the key.
- High rental potential and ROI.
- High quality and modern design.

**£129,000**



45 m<sup>2</sup> to 57 m<sup>2</sup>



Studio



1 Bathroom



41 Months  
Instalments



October 2024 -  
October 2026  
Completion





# Studio Apartment near Long Beach

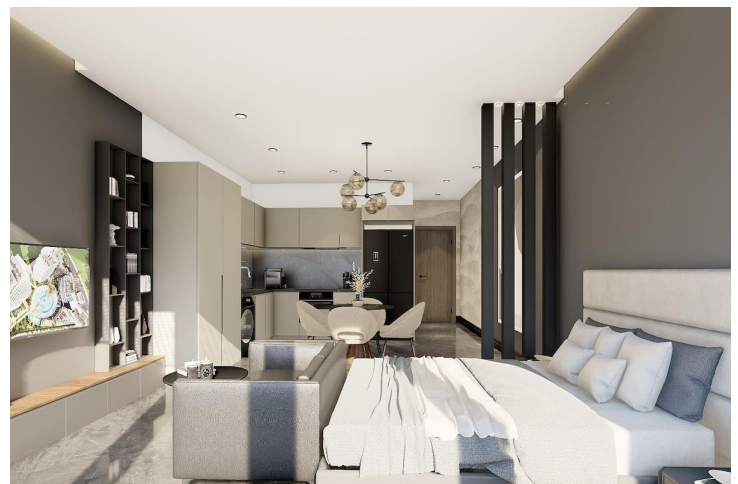
## Exterior Images





# Studio Apartment near Long Beach

## Interior Images



# Studio Apartment near Long Beach

## Floor Plan



### **3TH FLOOR** **BLOCK A**

	<b>AREA</b>
<b>FLAT 19 (2+1)</b>	<b>114 M<sup>2</sup></b>
<b>FLAT 20 (1+1)</b>	<b>87 M<sup>2</sup></b>
<b>FLAT 21 (STUDIO)</b>	<b>47.5 M<sup>2</sup></b>

	<b>AREA</b>
<b>FLAT 22 (1+1)</b>	<b>87 M<sup>2</sup></b>
<b>FLAT 23 (2+1)</b>	<b>114 M<sup>2</sup></b>



# Facilities



Aquapark



Bar



Cafe



Car Rental



Children's Playground



Fitness



Gardens (Landspaced)



Gated Community



Lift



Market



Onsite Management



Parking



Pool (Heated Indoor)



Pool (Outdoor)



Restaurant



Sauna



Spa





# Site Plan

Long Beach, Iskele Long Beach, North Cyprus





# Project Location

The complex is located in the Iskele area within walking distance to the famous sandy beach of Long Beach.



Hospital	2 mins	Pera Mackenzie Beach Club	4 mins
Supermarket	2 mins	Famagusta	20 mins
Long Beach	2 mins	Nicosia	50 mins
Bars and Clubs	3 mins	Larnaca Airport	60 mins
5 Star Hotel and Casino	3 mins	Ercan Airport	60 mins





# About the Project

This exceptional real estate project is designed to offer a luxurious lifestyle in a stunning location, featuring a blend of modern architecture and natural beauty. Set on a sprawling 2.5-hectare area, the development comprises five blocks with a total of 416 diverse apartment options, alongside a hotel with 60 rooms.

Residents can enjoy breathtaking views of the sea and mountains from spacious penthouses, which include high-end amenities such as a jacuzzi, luxury fitted kitchens, and advanced security systems. The project emphasizes a harmonious living experience, integrating beautifully landscaped areas and a variety of social activities that cater to all ages.

In addition to residential offerings, the development includes recreational facilities such as a playground designed for children's safety and a mini-golf area, promoting physical and mental development while encouraging social interaction.

With a commitment to quality and comfort, this project not only provides a home but also a lifestyle that embodies the essence of a year-round holiday experience. Whether you are looking for a permanent residence or a vacation getaway, this project promises to meet your needs with elegance and sophistication.



# Studio Apartment near Long Beach

Construction Status

April 2025



March 2025





# Payment Plan For This Property Type

## Property Info

Type
Studio Apartment

No
17

Block
E

Floor
2

Interior
41.80 m <sup>2</sup>

Balcony Terrace
5.70 m <sup>2</sup>

Total Living Space
47.50 m <sup>2</sup>



# Payment Plan For This Property Type

## Payment Plan

Current Date	Start Date	Delivery Date	Price	Initial Payment Amount
May 2025	June 2024	October 2026	£129,000	£51,600 40%

30% of the installment payment plan

1. Installment June 2025	£2,277
2. Installment July 2025	£2,277
3. Installment August 2025	£2,277
4. Installment September 2025	£2,277
5. Installment October 2025	£2,277
6. Installment November 2025	£2,277
7. Installment December 2025	£2,277
8. Installment January 2026	£2,277
9. Installment February 2026	£2,277
10. Installment March 2026	£2,277
11. Installment April 2026	£2,277
12. Installment May 2026	£2,277
13. Installment June 2026	£2,277
14. Installment July 2026	£2,277
15. Installment August 2026	£2,277
16. Installment September 2026	£2,277
17. Installment October 2026	£2,277





# Payment Plan For This Property Type

## Payment Plan

**30%** Payment plan remaining after delivery

1. Installment November 2026	£1,613
2. Installment December 2026	£1,613
3. Installment January 2027	£1,613
4. Installment February 2027	£1,613
5. Installment March 2027	£1,613
6. Installment April 2027	£1,613
7. Installment May 2027	£1,613
8. Installment June 2027	£1,613
9. Installment July 2027	£1,613
10. Installment August 2027	£1,613
11. Installment September 2027	£1,613
12. Installment October 2027	£1,613
13. Installment November 2027	£1,613
14. Installment December 2027	£1,613
15. Installment January 2028	£1,613
16. Installment February 2028	£1,613
17. Installment March 2028	£1,613
18. Installment April 2028	£1,613
19. Installment May 2028	£1,613
20. Installment June 2028	£1,613
21. Installment July 2028	£1,613
22. Installment August 2028	£1,613
23. Installment September 2028	£1,613
24. Installment October 2028	£1,592

