



## Two Bedroom Semi Detached Villa in Lapta

Lapta, Kyrenia West, North Cyprus

- Property Ref: 1827
- Semi-detached house with private parking space, private garden and private entrance.
- Three bathrooms and a dressing room.
- Communal swimming pool and close community.
- Modern design and high quality construction.
- Flexible payment plan.

**£490,000**



140 m<sup>2</sup>



2 Bedrooms



3 Bathrooms



7 Months  
Instalments



December 2025  
Completion



# Two Bedroom Semi Detached Villa in Lapta

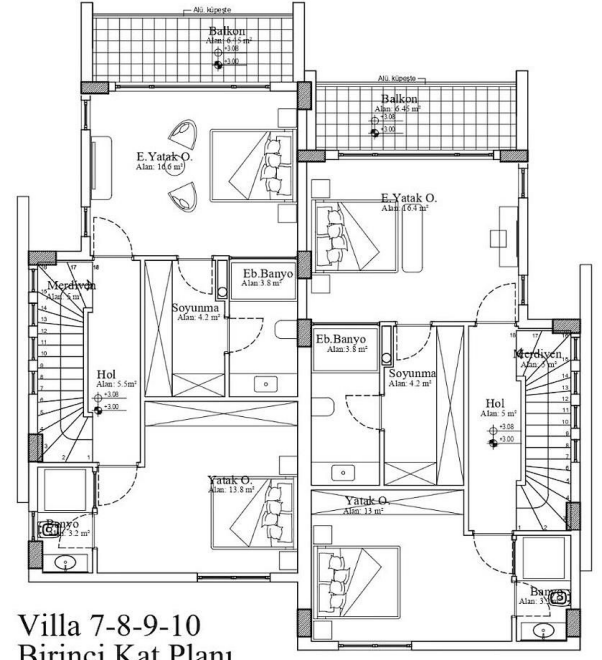
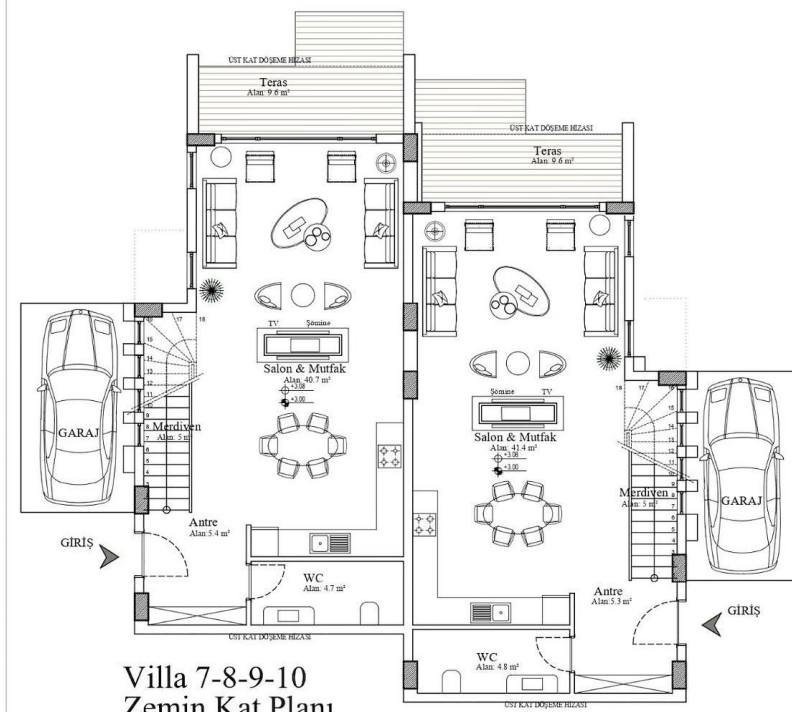
## Exterior Images





# Two Bedroom Semi Detached Villa in Lapta

## Floor Plan



# Facilities



Bar



Gardens (Landspaced)



Gated Community



Parking



Pool (Outdoor)





# Site Plan

Lapta, Kyrenia West, North Cyprus



# Project Location

This project is located in a beautiful area of Lapta.



|                           |        |                           |         |
|---------------------------|--------|---------------------------|---------|
| Supermarket               | 2 mins | Necat British College     | 12 mins |
| Beach                     | 2 mins | Girne American University | 18 mins |
| Lapta Coastal Walkway     | 3 mins | Kyrenia Town Center       | 25 mins |
| Pharmacy                  | 3 mins | Ercan Airport             | 70 mins |
| 5 Star Hotels and Casinos | 5 mins | Larnaca Airport           | 80 mins |





# About the Project

This exceptional residential project offers a harmonious blend of luxury and natural beauty, set in one of the most picturesque areas of the island. Located just 10 km from Kyrenia, on the border of Lapta and Karsiyaka, this project immerses you in a serene environment that has preserved its untouched charm.

Picture yourself savoring your morning coffee while watching the sunrise or ending the day with a glass of wine as the sun sets in breathtaking hues over the Mediterranean Sea and the Kyrenia mountains. This exclusive development is designed for romantic couples and families seeking a perfect balance of luxury, comfort, and natural harmony.

The project features 17 villas, including 11 detached units and 6 townhouses, built around an impressive 980 m<sup>2</sup> swimming pool. The pool area is enhanced with resting islands, sun loungers, and a stylish bar, all connected by elegant wooden bridges. Every villa offers 128 m<sup>2</sup> of living space, complemented by a 48 m<sup>2</sup> rooftop terrace with a barbecue area, allowing you to fully enjoy the stunning surroundings. Flexible layout options of 2+1 or 3+1 are available, with customization during construction to suit your preferences.

## Highlights and Features:

**High-End Materials:** Homes feature premium materials, including German Rehau windows and Grohe sanitary ware.

**Modern Systems:** VRF air conditioning infrastructure, central vacuum system, and underfloor heating setup for gas or electric boilers (installation optional).

**Sophisticated Design:** Glass fireplaces open on four sides, smart layouts with spacious rooms, and a laundry room in 2+1 configurations.

**Rooftop Living:** A rooftop terrace with a barbecue area, perfect for entertaining or relaxing with panoramic views.

**Proximity to Nature:** Close to the sea and surrounded by stunning vistas.

This unique project redefines luxury living, offering unparalleled design, a prime location, and exceptional amenities. Whether for a tranquil retreat or an investment, it promises an extraordinary lifestyle.

# Two Bedroom Semi Detached Villa in Lapta

Construction Status

April 2025



March 2025





# Payment Plan For This Property Type

## Property Info

|                               |                       |
|-------------------------------|-----------------------|
| Type                          | No                    |
| 2 Bedroom Semi-detached Villa | 9                     |
| Floor                         | Interior              |
| 0                             | 123.95 m <sup>2</sup> |
| Balcony Terrace               | Total Living Space    |
| 16.05 m <sup>2</sup>          | 140.00 m <sup>2</sup> |
| Plot                          |                       |
| 60.00 m <sup>2</sup>          |                       |



# Payment Plan For This Property Type

## Payment Plan

|              |               |               |          |                           |
|--------------|---------------|---------------|----------|---------------------------|
| Current Date | Start Date    | Delivery Date | Price    | Initial Payment Amount    |
| May 2025     | December 2023 | December 2025 | £490,000 | £147,000 <span>30%</span> |

70% of the installment payment plan

|                               |         |
|-------------------------------|---------|
| 1. Installment June 2025      | £49,000 |
| 2. Installment July 2025      | £49,000 |
| 3. Installment August 2025    | £49,000 |
| 4. Installment September 2025 | £49,000 |
| 5. Installment October 2025   | £49,000 |
| 6. Installment November 2025  | £49,000 |
| 7. Installment December 2025  | £49,000 |

