



# One Bedroom Loft Penthouse in Esentepe

Esentepe, Kyrenia East, North Cyprus

- Property Ref: 1911
- Hotel services and facilities.
- Eco-conscious design.
- Stunning views of the sea and mountains.
- Modern design and high quality construction.
- Flexible payment plan.

Starting from  
**£316,113**



64 m<sup>2</sup>



1 Bedroom



2 Bathrooms



11 Months  
Instalments



February 2026 -  
May 2026  
Completion





# One Bedroom Loft Penthouse in Esentepe

## Exterior Images





# One Bedroom Loft Penthouse in Esentepe

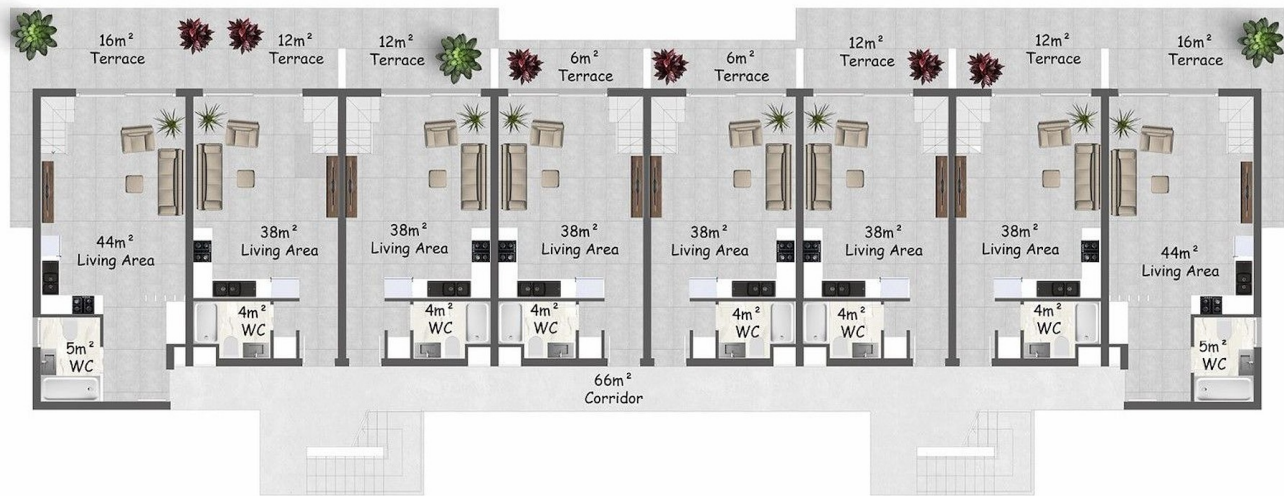
## Interior Images



# One Bedroom Loft Penthouse in Esentepe

## Floor Plan

First Floor Plan Area: Each Unit 49 m<sup>2</sup> / 42 m<sup>2</sup>





# Facilities



Anti-aging



Bakery



Bar



Cafe



Car Rental



Central Generator System (Communal Areas)



Central Generator System (Homes)



Children's Playground



Cycling Paths



Fitness



Gardens (Landspaced)



Hiking Paths



Laundry



Marina (On-site)



Meeting/Conference Room



Onsite Management



Parking



Pool (Heated Indoor)



Pool (Outdoor)



Restaurant



Running Paths



Sauna



Shuttle Service



Spa



Steam Room



Tennis



Turkish Hammam



Wellness



# Facilities



Yoga

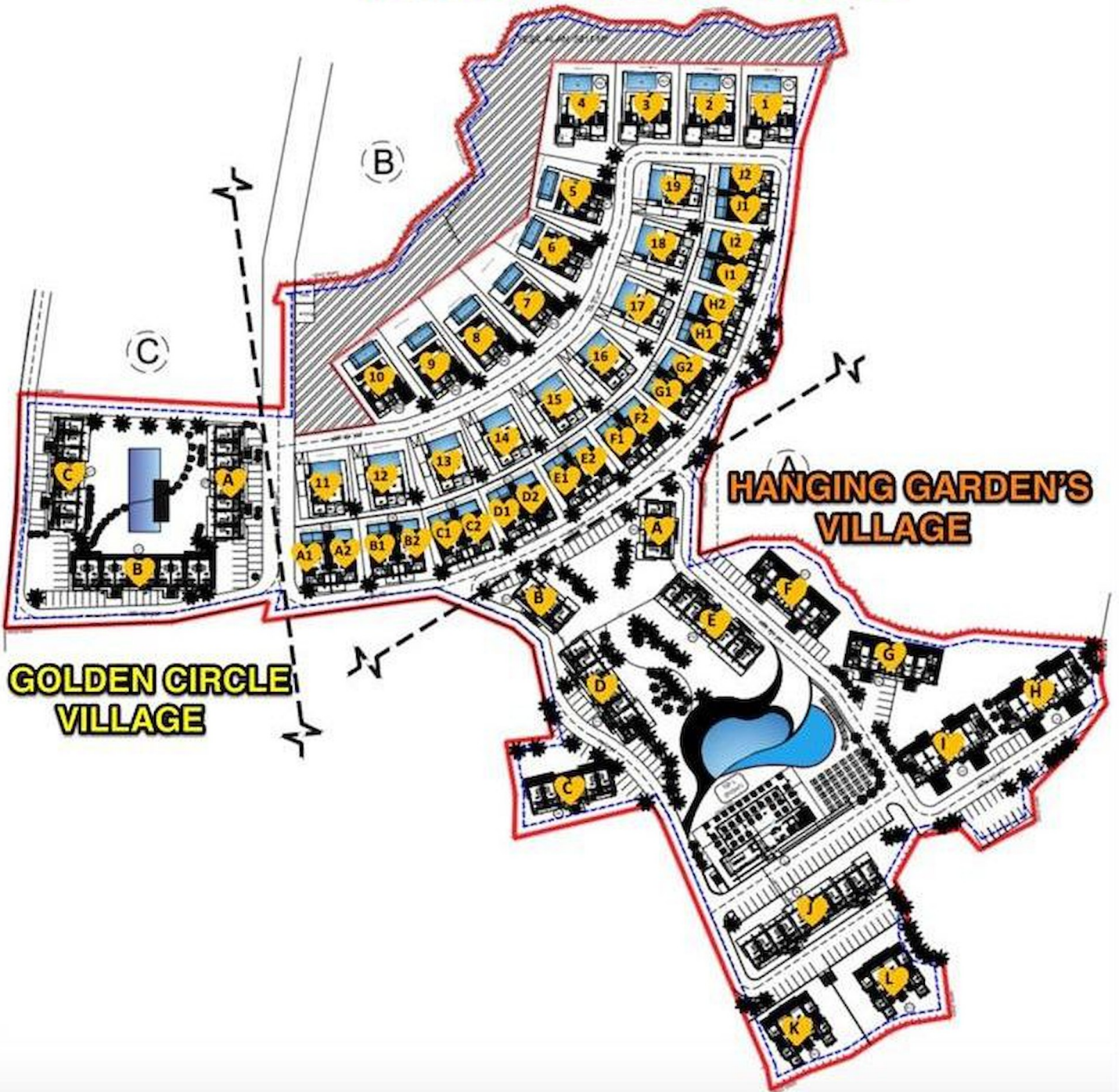




# Site Plan

Esentepe, Kyrenia East, North Cyprus

## WONDER STONES VILLAGE





# Project Location

The project is located in the picturesque area of Esentepe between the sea and the mountains.



Restaurant and Bar	1 min	Korineum Golf Club	5 mins
Beach	2 mins	Kyrenia	20 mins
Supermarket	2 mins	Ercan Airport	40 mins
Pharmacy	2 mins	Famagusta	45 mins
Fitness and Spa Center	3 mins	Larnaca Airport	70 mins





# About the Project

A new living concept is taking shape in Esentepe — a thoughtfully planned residential area set in the heart of nature, just minutes from a supermarket, pharmacy, and the beach and marina. Designed to offer a lifestyle of comfort, tranquility, and recreation, this upcoming phase blends harmoniously with the surrounding sea and mountain landscape.

The architecture prioritizes environmentally friendly materials and sustainable construction methods, aiming to create a seamless connection with nature. Every detail has been carefully considered to support a high-quality life in a calm, scenic environment.

This new phase marks a step forward in green living — where peace of mind and eco-conscious design come together for a truly refreshing way of life.



# Payment Plan For This Property Type

## Property Info

Type
<b>1 Bedroom Duplex Penthouse</b>

No
<b>14</b>

Block
<b>C</b>

Floor
<b>1</b>

Interior
<b>64.00 m<sup>2</sup></b>

Total Living Space
<b>64.00 m<sup>2</sup></b>





# Payment Plan For This Property Type

## Payment Plan

Current Date	Start Date	Delivery Date	Price	Initial Payment Amount
May 2025	April 2024	May 2026	£316,113	£110,640 <span>35%</span>

65% of the installment payment plan

1. Installment June 2025	£18,680
2. Installment July 2025	£18,680
3. Installment August 2025	£18,680
4. Installment September 2025	£18,680
5. Installment October 2025	£18,680
6. Installment November 2025	£18,680
7. Installment December 2025	£18,680
8. Installment January 2026	£18,680
9. Installment February 2026	£18,680
10. Installment March 2026	£18,680
11. Installment April 2026	£18,673

