



Two Bedroom Garden Apartment in Esentepe

Esentepe, Kyrenia East, North Cyprus

- Property Ref: 1971
- Private Garden.
- Rich facilities.
- Walking distance to the beach and supermarket.
- Car rental service.
- Flexible payment plan.

£152,900



85 m²



2 Bedrooms



2 Bathrooms



34 Months Instalments

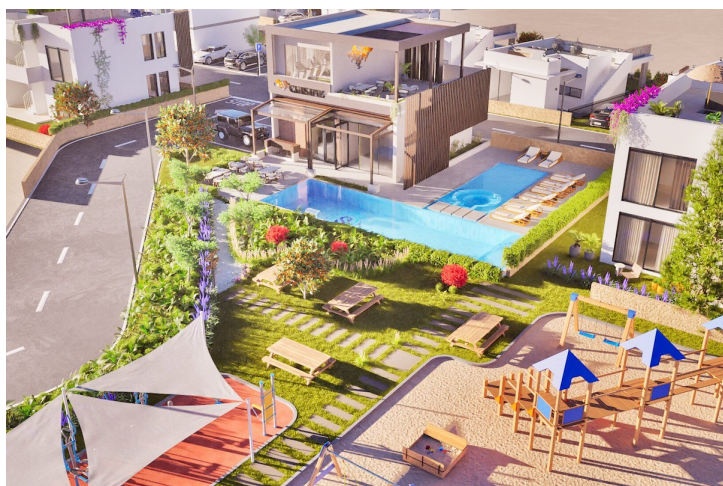
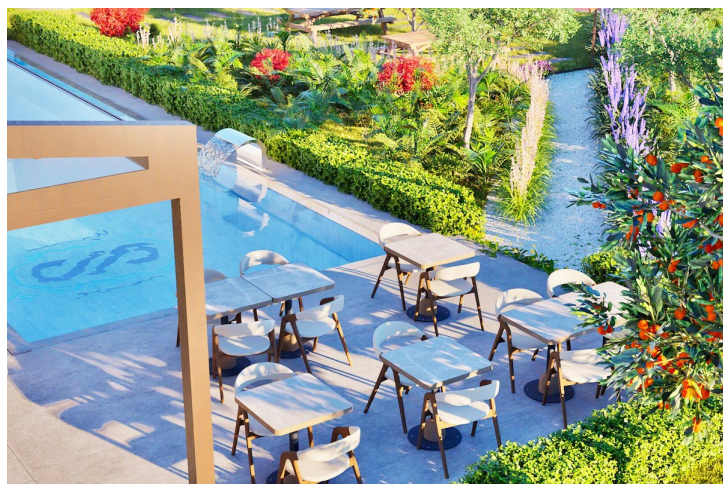


December 2027
Completion



Two Bedroom Garden Apartment in Esentepe

Exterior Images



Two Bedroom Garden Apartment in Esentepe

Interior Images



Two Bedroom Garden Apartment in Esentepe

Floor Plan



Ground Floor

Apt.Type

Site Plan

Esentepe, Kyrenia East, North Cyprus



Project Location

Project in located in Esentepe, Girne.



Supermarket	2 mins	Beach Club	5 mins
Beach	3 mins	ATM & Bank	5 mins
Pharmacy	4 mins	Kyrenia	20 mins
Cafes and Restaurants	4 mins	Ercan International Airport	50 mins
Korineum Golf Course	5 mins	Larnaca International Airport	65 mins



About the Project

Set just 900 meters from the Mediterranean coast in the tranquil Esentepe area of Kyrenia, this thoughtfully designed development offers the perfect blend of nature, comfort, and convenience. With only 26 exclusive units, the project ensures a serene and private living environment surrounded by breathtaking sea and mountain views.

Choose from a diverse selection of 2+1 garden apartments, 2+1 penthouses, spacious 2+1 and 3+1 bungalows, or elegant 3+1 villas — each bungalow and villa featuring its own private swimming pool and garden for elevated living.

On-site amenities include a stylish Georgian restaurant, a large communal swimming pool, a well-equipped fitness center, a children's playground, and a dedicated relaxation park. Additional features such as a generator, ample parking, and a convenient shuttle service further enhance everyday comfort.

Whether you're looking for a permanent residence, a holiday home, or a high-return investment opportunity, this project in Esentepe offers a rare combination of natural beauty and modern living.

Payment Plan For This Property Type

Property Info

Type

2 Bedroom Garden Apartment

No

2

Block

F2

Floor

0

Interior

72.00 m²

Balcony Terrace

13.00 m²

Total Living Space

85.00 m²



Payment Plan For This Property Type

Payment Plan

Current Date	Start Date	Delivery Date	Price	Initial Payment Amount
June 2025	October 2025	December 2027	£152,900	£53,515 35%

60% of the installment payment plan

1. Installment July 2025	£3,164	25. Installment July 2027	£3,164
2. Installment August 2025	£3,164	26. Installment August 2027	£3,164
3. Installment September 2025	£3,164	27. Installment September 2027	£3,164
4. Installment October 2025	£3,164	28. Installment October 2027	£3,164
5. Installment November 2025	£3,164	29. Installment November 2027	£3,164
6. Installment December 2025	£3,164		
7. Installment January 2026	£3,164		
8. Installment February 2026	£3,164		
9. Installment March 2026	£3,164		
10. Installment April 2026	£3,164		
11. Installment May 2026	£3,164		
12. Installment June 2026	£3,164		
13. Installment July 2026	£3,164		
14. Installment August 2026	£3,164		
15. Installment September 2026	£3,164		
16. Installment October 2026	£3,164		
17. Installment November 2026	£3,164		
18. Installment December 2026	£3,164		
19. Installment January 2027	£3,164		
20. Installment February 2027	£3,164		
21. Installment March 2027	£3,164		
22. Installment April 2027	£3,164		
23. Installment May 2027	£3,164		
24. Installment June 2027	£3,164		



Payment Plan For This Property Type

Payment Plan

5% Payment plan remaining after delivery

1. Installment December 2027	£1,529
2. Installment January 2028	£1,529
3. Installment February 2028	£1,529
4. Installment March 2028	£1,529
5. Installment April 2028	£1,513

