

Studio Apartment Within Walking Distance to The Beach

Bahceli, Kyrenia East, North Cyprus

- Property Ref: 228
- The complex will house many facilities including, anti-ageing & rejuvenation treatments, spa, gym, indoor and outdoor swimming pools, a restaurant and many more
- Limited availability remaining on this super complex, 98% of the properties have been sold
- The value of your property investment is highly likely to increase 35% within 2 years
- Located in the beautiful area of Tatlisu with stunning sea and mountain views
- Only 7 minutes walk from the beach

Starting from
£119,000



49 m²



Studio



1 Bathroom



9 Months Instalments



March 2026 Completion



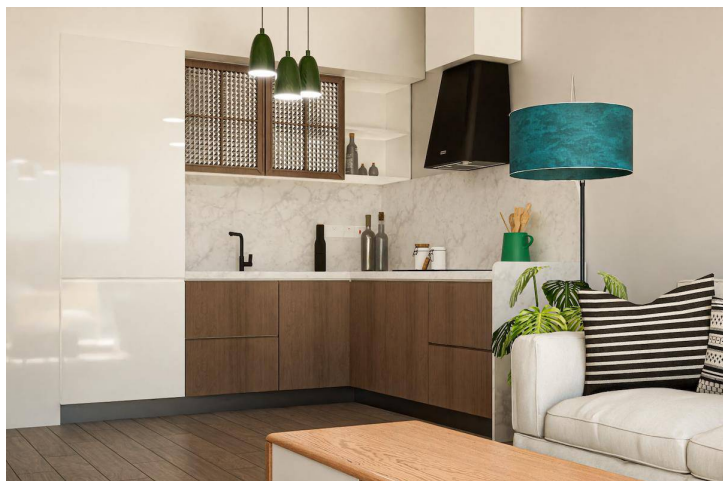
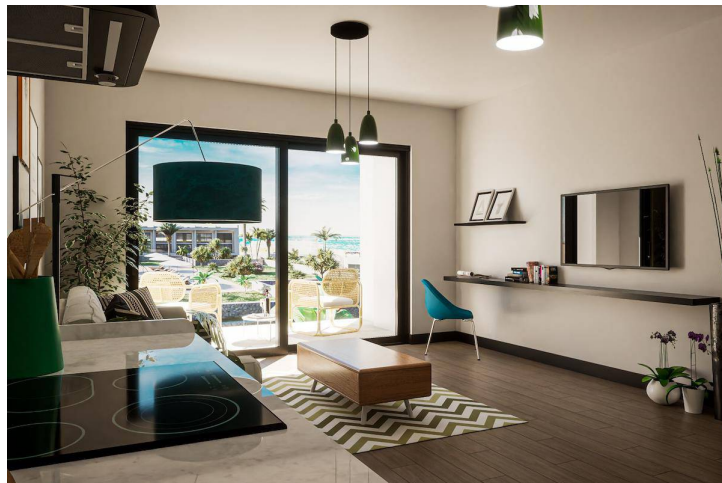
Studio Apartment Within Walking Distance to The Beach

Exterior Images



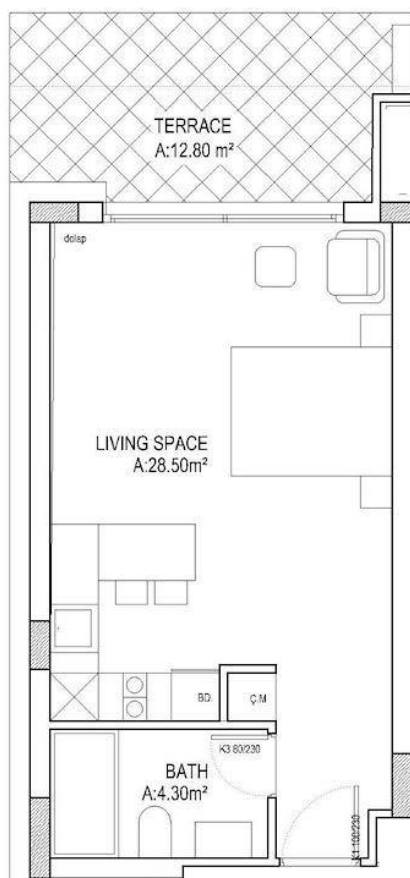
Studio Apartment Within Walking Distance to The Beach

Interior Images



Studio Apartment Within Walking Distance to The Beach

Floor Plan



CLV STUDIO GARDEN

Total Area: 49.0 m2

Internal Covered: 37.0 m2

Terrace: 12.0 m2

Facilities



Bar



Cafe



Gardens (Landspaced)



Parking

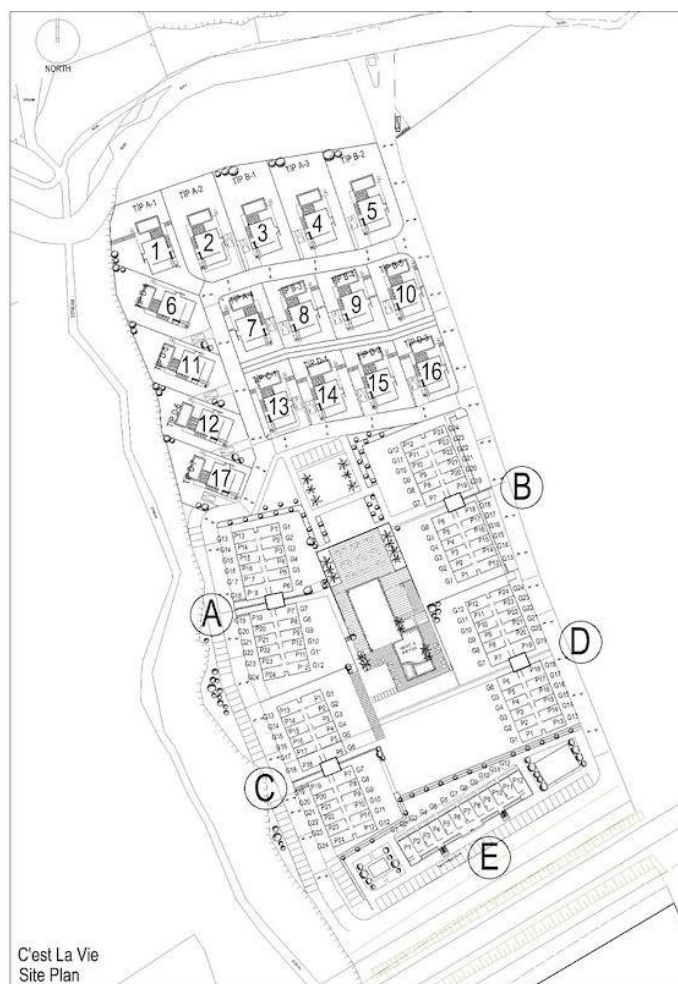


Pool (Outdoor)



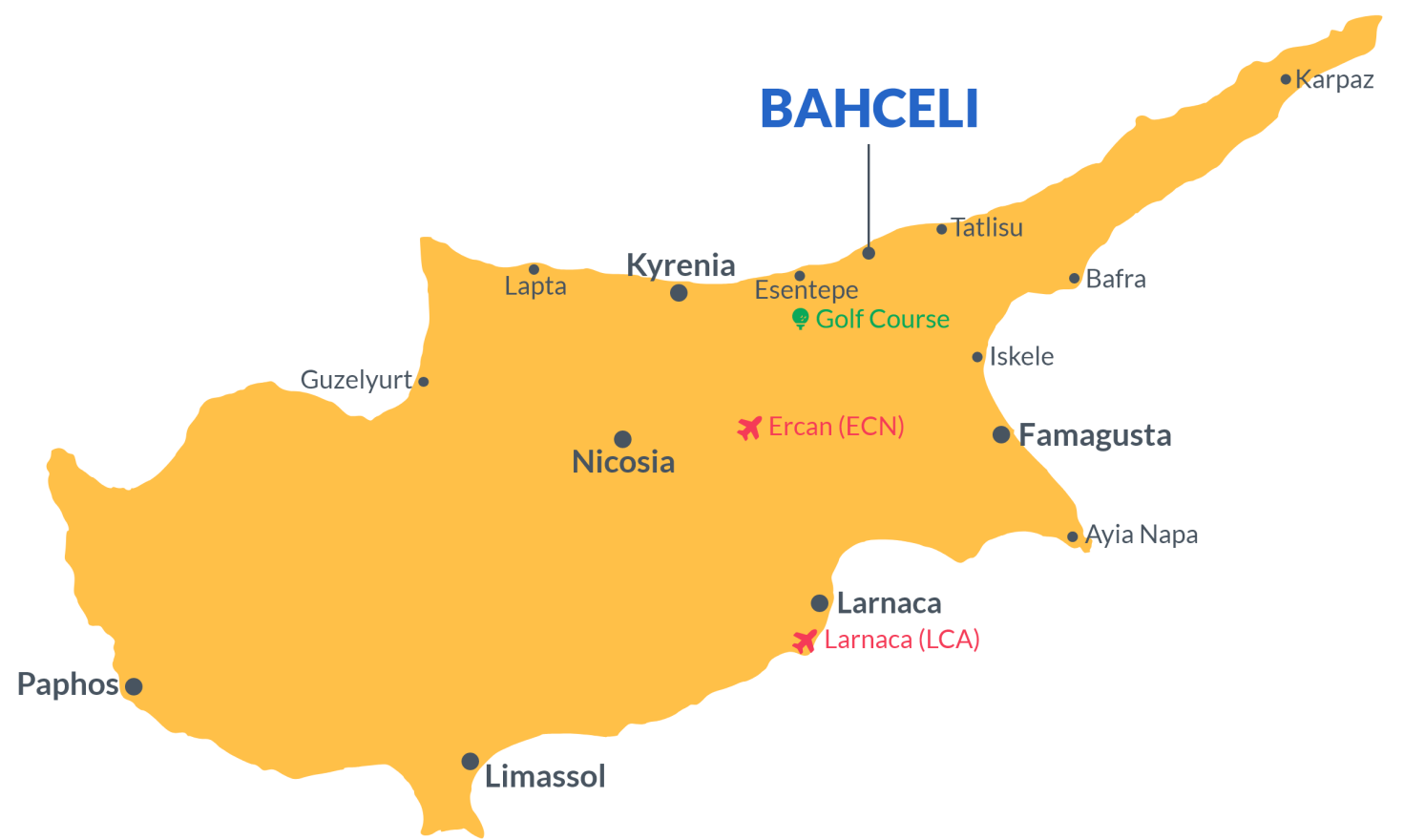
Site Plan

Bahceli, Kyrenia East, North Cyprus



Project Location

This project is located in **Bahceli**



Esentepe Village	2 mins	Acapulco Spa Resort	20 mins
Supermarket	2 mins	Suat Günsel Hospital	20 mins
Pharmacy	2 mins	Kyrenia Town Centre	30 mins
Bars and Clubs	3 mins	Ercan Airport	60 mins
Korineum Golf Course	10 mins	Larnaca Airport	70 mins



About the Project

White Cliff Homes is set on a beautiful seafront location in Bahceli, North Cyprus. This development is made up of garden studios, one-bedroom penthouse apartments and three-bedroom bungalows. The three-bedroom bungalows each have their own garden, large rooftop terrace and optional private swimming pool.

We have adopted a terraced-based design on the land to ensure that homeowners are able to enjoy unobstructed views of the Mediterranean Sea.

The project sits just 7 minutes away from a maintained beach accessed via the old coastal road. This is a unique property investment opportunity in Northern Cyprus with its amazing location.



Studio Apartment Within Walking Distance to The Beach

Construction Status

April 2025



March 2025



Payment Plan For This Property Type

Property Info

Type	No
Studio Apartment	G17
Block	Interior
D	37.00 m ²
Balcony Terrace	Total Living Space
12.00 m ²	49.00 m ²



Payment Plan For This Property Type

Payment Plan

Current Date	Start Date	Delivery Date	Price	Initial Payment Amount
May 2025	January 2023	March 2026	£119,000	£59,500 50%

50% of the installment payment plan

1. Installment June 2025	£6,612
2. Installment July 2025	£6,612
3. Installment August 2025	£6,612
4. Installment September 2025	£6,612
5. Installment October 2025	£6,612
6. Installment November 2025	£6,612
7. Installment December 2025	£6,612
8. Installment January 2026	£6,612
9. Installment February 2026	£6,604

