



## Two Bedroom Townhouses with Pools in Bahceli

Bahceli, Kyrenia East, North Cyprus

**£305,000**

- Property Ref: 231
- A new living complex suitable for everyone with an individual villa with pool, semi-detached villas with pool option and apartments with shared pool.
- Communal areas; Gym & Sports field, Communal open and closed pool, SPA & Wellness center.
- Expected capital appreciation 30% in 2 years.
- Close to all necessities, including supermarkets and pharmacies
- Designed with modern architecture



141 m<sup>2</sup> to 152 m<sup>2</sup>



2 Bedrooms



2 Bathrooms



84 Months Instalments



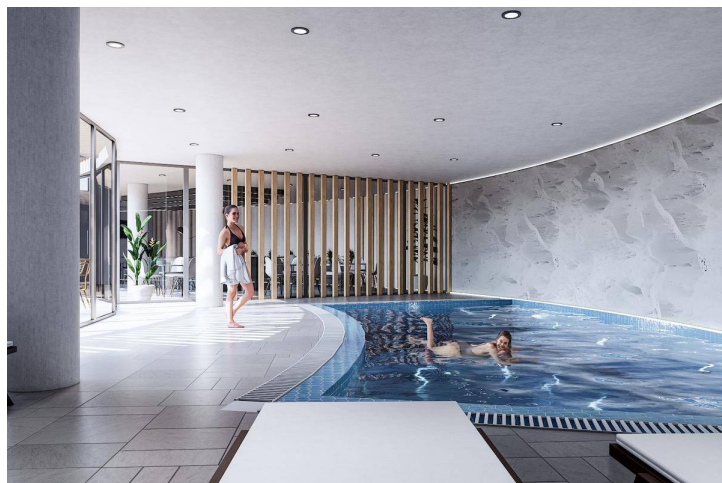
June 2025  
Completion





# Two Bedroom Townhouses with Pools in Bahceli

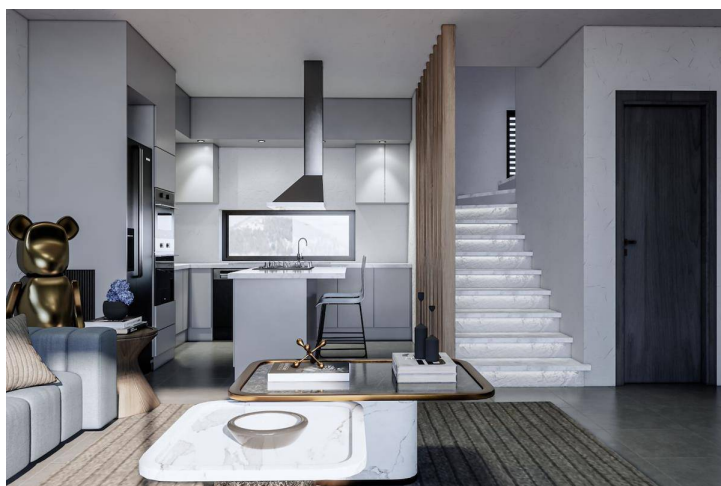
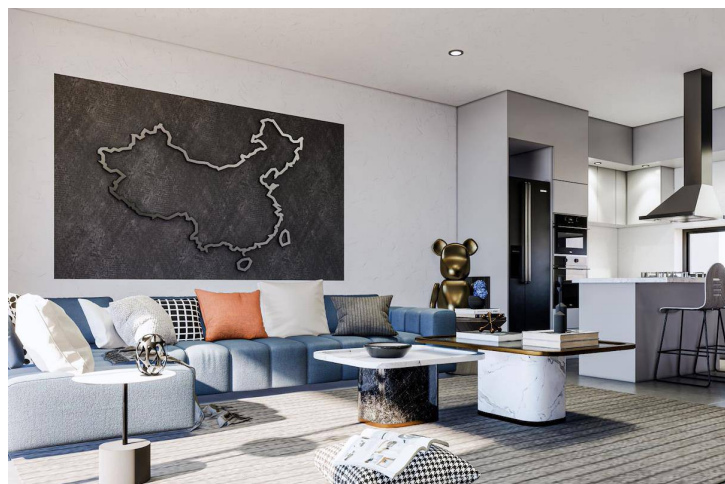
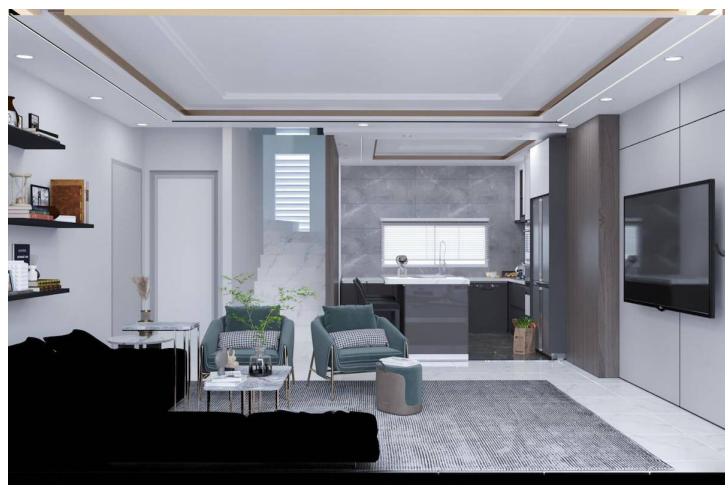
## Exterior Images





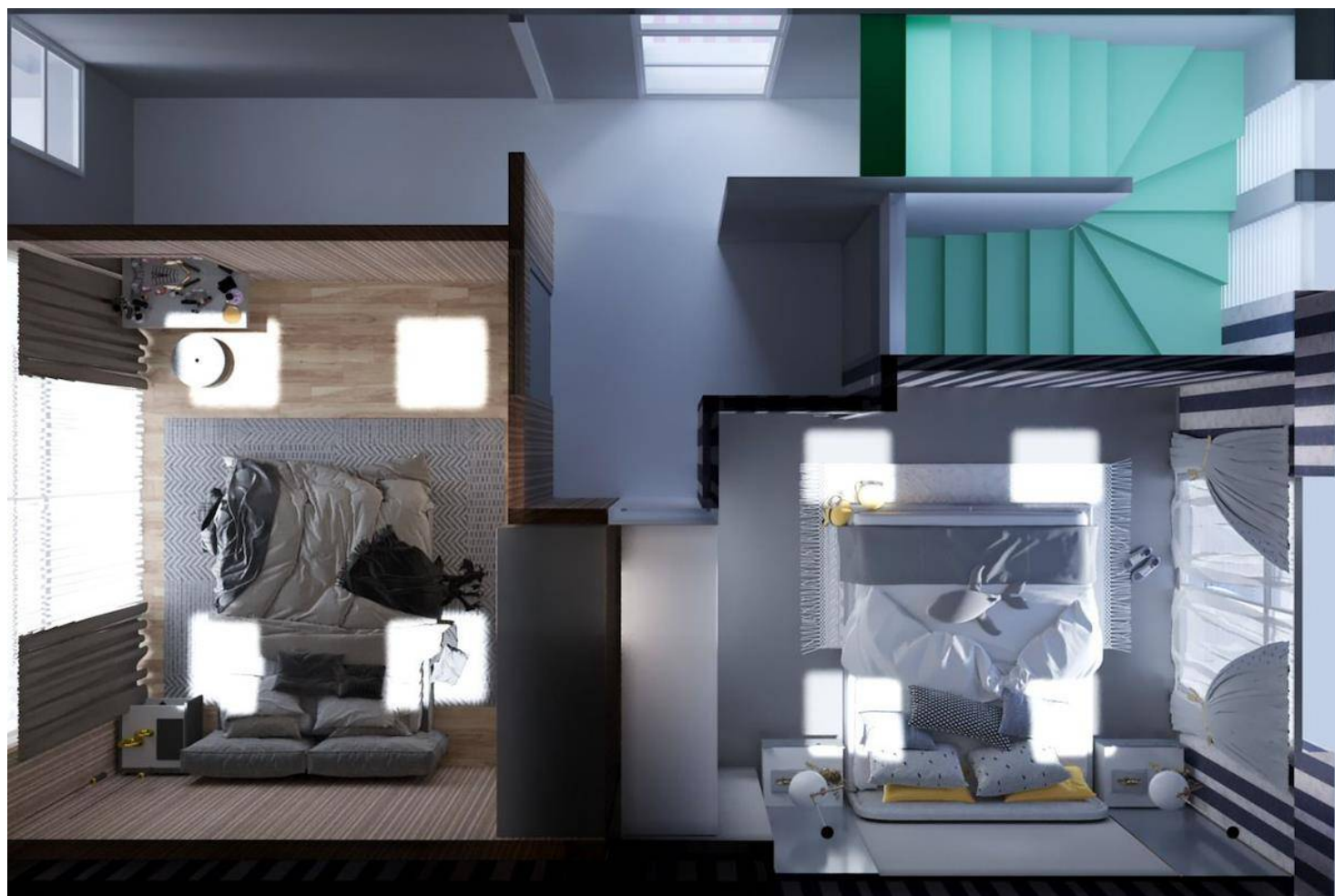
# Two Bedroom Townhouses with Pools in Bahceli

## Interior Images



# Two Bedroom Townhouses with Pools in Bahceli

## Floor Plan





# Facilities



Bar



Cafe



Fitness



Onsite Management



Parking



Pool (Heated Indoor)



Pool (Outdoor)



Shuttle Service



Spa



Turkish Hammam



Wellness





## Bahceli, Kyrenia East, North Cyprus

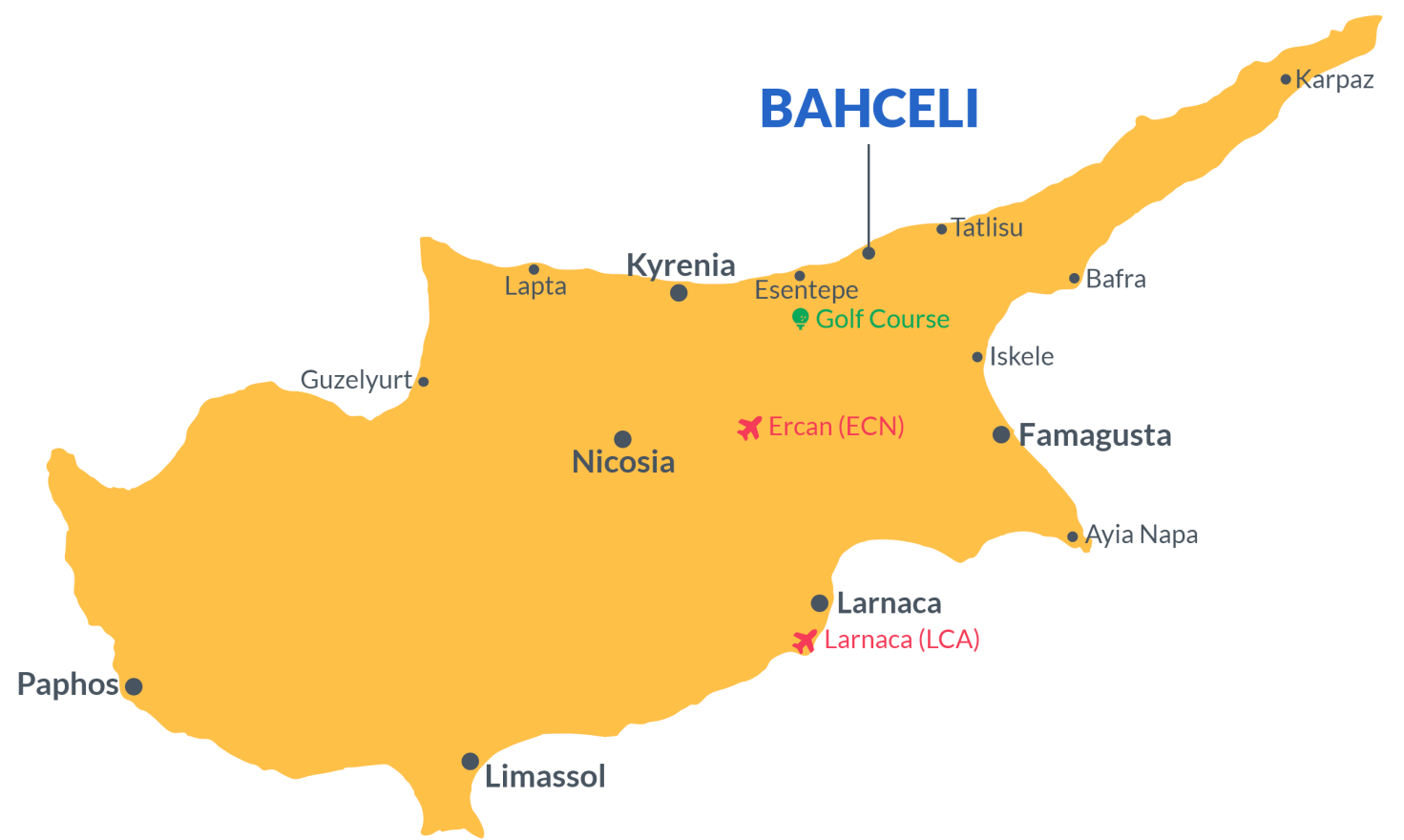
S. BUREAU (1512)				S. BUREAU (1512)				UP. BUREAU (1512)				S. BUREAU (1512)			
Village	m2	Tec.	Roor/Fac.	Village	m2	Tec.	Roor/Fac.	Tween Village	m2	Tec.	Roor/Fac.	Tween Village	m2	Tec.	Roor/Fac.
A301	132.7	45.1	0	A301	132.7	45.1	0	C001	90.9	15.9	22.6	C101	90.9	15.9	22.6
A201	132.7	45.1	0	A201	132.7	45.1	0	C002	90.9	15.9	22.6	C102	90.9	15.9	22.6
A101	132.7	45.1	0	A101	132.7	45.1	0	C003	90.9	15.9	22.6	C103	90.9	15.9	22.6
A001	132.7	45.1	0	A001	132.7	45.1	0	C004	90.9	15.9	22.6	C104	90.9	15.9	22.6
A001	132.7	45.1	0	A001	132.7	45.1	0	C005	90.9	15.9	22.6	C105	90.9	15.9	22.6
A001	132.7	45.1	0	A001	132.7	45.1	0	C006	90.9	15.9	22.6	C106	90.9	15.9	22.6
A001	132.7	45.1	0	A001	132.7	45.1	0	C007	90.9	15.9	22.6	C107	90.9	15.9	22.6
A001	132.7	45.1	0	A001	132.7	45.1	0	C008	90.9	15.9	22.6	C108	90.9	15.9	22.6
A001	132.7	45.1	0	A001	132.7	45.1	0	C009	90.9	15.9	22.6	C109	90.9	15.9	22.6
A001	132.7	45.1	0	A001	132.7	45.1	0	C010	90.9	15.9	22.6	C110	90.9	15.9	22.6
A001	132.7	45.1	0	A001	132.7	45.1	0	C011	90.9	15.9	22.6	C111	90.9	15.9	22.6
A001	132.7	45.1	0	A001	132.7	45.1	0	C012	90.9	15.9	22.6	C112	90.9	15.9	22.6
A001	132.7	45.1	0	A001	132.7	45.1	0	C013	90.9	15.9	22.6	C113	90.9	15.9	22.6
A001	132.7	45.1	0	A001	132.7	45.1	0	C014	90.9	15.9	22.6	C114	90.9	15.9	22.6
A001	132.7	45.1	0	A001	132.7	45.1	0	C015	90.9	15.9	22.6	C115	90.9	15.9	22.6
A001	132.7	45.1	0	A001	132.7	45.1	0	C016	90.9	15.9	22.6	C116	90.9	15.9	22.6
A001	132.7	45.1	0	A001	132.7	45.1	0	C017	90.9	15.9	22.6	C117	90.9	15.9	22.6
A001	132.7	45.1	0	A001	132.7	45.1	0	C018	90.9	15.9	22.6	C118	90.9	15.9	22.6
A001	132.7	45.1	0	A001	132.7	45.1	0	C019	90.9	15.9	22.6	C119	90.9	15.9	22.6
A001	132.7	45.1	0	A001	132.7	45.1	0	C020	90.9	15.9	22.6	C120	90.9	15.9	22.6
A001	132.7	45.1	0	A001	132.7	45.1	0	C021	90.9	15.9	22.6	C121	90.9	15.9	22.6
A001	132.7	45.1	0	A001	132.7	45.1	0	C022	90.9	15.9	22.6	C122	90.9	15.9	22.6
A001	132.7	45.1	0	A001	132.7	45.1	0	C023	90.9	15.9	22.6	C123	90.9	15.9	22.6
A001	132.7	45.1	0	A001	132.7	45.1	0	C024	90.9	15.9	22.6	C124	90.9	15.9	22.6
A001	132.7	45.1	0	A001	132.7	45.1	0	C025	90.9	15.9	22.6	C125	90.9	15.9	22.6
A001	132.7	45.1	0	A001	132.7	45.1	0	C026	90.9	15.9	22.6	C126	90.9	15.9	22.6
A001	132.7	45.1	0	A001	132.7	45.1	0	C027	90.9	15.9	22.6	C127	90.9	15.9	22.6
A001	132.7	45.1	0	A001	132.7	45.1	0	C028	90.9	15.9	22.6	C128	90.9	15.9	22.6
A001	132.7	45.1	0	A001	132.7	45.1	0	C029	90.9	15.9	22.6	C129	90.9	15.9	22.6
A001	132.7	45.1	0	A001	132.7	45.1	0	C030	90.9	15.9	22.6	C130	90.9	15.9	22.6
A001	132.7	45.1	0	A001	132.7	45.1	0	C031	90.9	15.9	22.6	C131	90.9	15.9	22.6
A001	132.7	45.1	0	A001	132.7	45.1	0	C032	90.9	15.9	22.6	C132	90.9	15.9	22.6
A001	132.7	45.1	0	A001	132.7	45.1	0	C033	90.9	15.9	22.6	C133	90.9	15.9	22.6
A001	132.7	45.1	0	A001	132.7	45.1	0	C034	90.9	15.9	22.6	C134	90.9	15.9	22.6
A001	132.7	45.1	0	A001	132.7	45.1	0	C035	90.9	15.9	22.6	C135	90.9	15.9	22.6
A001	132.7	45.1	0	A001	132.7	45.1	0	C036	90.9	15.9	22.6	C136	90.9	15.9	22.6
A001	132.7	45.1	0	A001	132.7	45.1	0	C037	90.9	15.9	22.6	C137	90.9	15.9	22.6
A001	132.7	45.1	0	A001	132.7	45.1	0	C038	90.9	15.9	22.6	C138	90.9	15.9	22.6
A001	132.7	45.1	0	A001	132.7	45.1	0	C039	90.9	15.9	22.6	C139	90.9	15.9	22.6
A001	132.7	45.1	0	A001	132.7	45.1	0	C040	90.9	15.9	22.6	C140	90.9	15.9	22.6
A001	132.7	45.1	0	A001	132.7	45.1	0	C041	90.9	15.9	22.6	C141	90.9	15.9	22.6
A001	132.7	45.1	0	A001	132.7	45.1	0	C042	90.9	15.9	22.6	C142	90.9	15.9	22.6
A001	132.7	45.1	0	A001	132.7	45.1	0	C043	90.9	15.9	22.6	C143	90.9	15.9	22.6
A001	132.7	45.1	0	A001	132.7	45.1	0	C044	90.9	15.9	22.6	C144	90.9	15.9	22.6
A001	132.7	45.1	0	A001	132.7	45.1	0	C045	90.9	15.9	22.6	C145	90.9	15.9	22.6
A001	132.7	45.1	0	A001	132.7	45.1	0	C046	90.9	15.9	22.6	C146	90.9	15.9	22.6
A001	132.7	45.1	0	A001	132.7	45.1	0	C047	90.9	15.9	22.6	C147	90.9	15.9	22.6
A001	132.7	45.1	0	A001	132.7	45.1	0	C048	90.9	15.9	22.6	C148	90.9	15.9	22.6
A001	132.7	45.1	0	A001	132.7	45.1	0	C049	90.9	15.9	22.6	C149	90.9	15.9	22.6
A001	132.7	45.1	0	A001	132.7	45.1	0	C050	90.9	15.9	22.6	C150	90.9	15.9	22.6
A001	132.7	45.1	0	A001	132.7	45.1	0	C051	90.9	15.9	22.6	C151	90.9	15.9	22.6
A001	132.7	45.1	0	A001	132.7	45.1	0	C052	90.9	15.9	22.6	C152	90.9	15.9	22.6
A001	132.7	45.1	0	A001	132.7	45.1	0	C053	90.9	15.9	22.6	C153	90.9	15.9	22.6
A001	132.7	45.1	0	A001	132.7	45.1	0	C054	90.9	15.9	22.6	C154	90.9	15.9	22.6
A001	132.7	45.1	0	A001	132.7	45.1	0	C055	90.9	15.9	22.6	C155	90.9	15.9	22.6
A001	132.7	45.1	0	A001	132.7	45.1	0	C056	90.9	15.9	22.6	C156	90.9	15.9	22.6
A001	132.7	45.1	0	A001	132.7	45.1	0	C057	90.9	15.9	22.6	C157	90.9	15.9	22.6
A001	132.7	45.1	0	A001	132.7	45.1	0	C058	90.9	15.9	22.6	C158	90.9	15.9	22.6
A001	132.7	45.1	0	A001	132.7	45.1	0	C059	90.9	15.9	22.6	C159	90.9	15.9	22.6
A001	132.7	45.1	0	A001	132.7	45.1	0	C060	90.9	15.9	22.6	C160	90.9	15.9	22.6
A001	132.7	45.1	0	A001	132.7	45.1	0	C061	90.9	15.9	22.6	C161	90.9	15.9	22.6
A001	132.7	45.1	0	A001	132.7	45.1	0	C062	90.9	15.9	22.6	C162	90.9	15.9	22.6
A001	132.7	45.1	0	A001	132.7	45.1	0	C063	90.9	15.9	22.6	C163	90.9	15.9	22.6
A001	132.7	45.1	0	A001	132.7	45.1	0	C064	90.9	15.9	22.6	C164	90.9	15.9	22.6
A001	132.7	45.1	0	A001	132.7	45.1	0	C065	90.9	15.9	22.6	C165	90.9	15.9	22.6
A001	132.7	45.1	0	A001	132.7	45.1	0	C066	90.9	15.9	22.6	C166	90.9	15.9	22.6
A001	132.7	45.1	0	A001	132.7	45.1	0	C067	90.9	15.9	22.6	C167	90.9	15.9	22.6
A001	132.7	45.1	0	A001	132.7	45.1	0	C068	90.9	15.9	22.6	C168	90.9	15.9	22.6
A001	132.7	45.1	0	A001	132.7	45.1	0	C069	90.9	15.9	22.6	C169	90.9	15.9	22.6
A001	132.7	45.1	0	A001	132.7	45.1	0	C070	90.9	15.9	22.6	C170	90.9	15.9	22.6
A001	132.7	45.1	0	A001	132.7	45.1	0	C071	90.9	15.9	22.6	C171	90.9	15.9	22.6
A001	132.7	45.1	0	A001	132.7	45.1	0	C072	90.9	15.9	22.6	C172	90.9	15.9	22.6
A001	132.7	45.1	0	A001	132.7	45.1	0	C073	90.9	15.9	22.6	C173	90.9	15.9	22.6
A001	132.7	45.1	0	A001	132.7	45.1	0	C074	90.9	15.9	22.6	C174	90.9	15.9	22.6
A001	132.7	45.1	0	A001	132.7	45.1	0	C075	90.9	15.9	22.6	C175	90.9	15.9	22.6
A001	132.7	45.1	0	A001	132.7	45.1	0	C076	90.9	15.9	22.6	C176	90.9	15.9	22.6
A001	132.7	45.1	0	A001	132.7	45.1	0	C077	90.9	15.9	22.6	C177	90.9	15.9	22.6
A001	132.7	45.1	0	A001	132.7	45.1	0	C078	90.9	15.9	22.6	C178	90.9	15.9	22.6
A001	132.7	45.1	0	A001	132.7	45.1	0	C079	90.9	15.9	22.6	C179	90.9	15.9	22.6
A001	132.7	45.1	0	A001	132.7	45.1	0	C080	90.9	15.9	22.6	C180	90.9	15.9	22.6
A001	132.7	45.1	0	A001	132.7	45.1	0	C081	90.9	15.9	22.6	C181	90.9	15.9	22.6
A001	132.7	45.1	0	A001	132.7	45.1	0	C082	90.9	15.9	22.6	C182	90.9	15.9	22.6
A001	132.7	45.1	0	A001	132.7	45.1	0	C083	90.9	15.9	22.6	C183	90.9	15.9	22.6
A001	132.7	45.1	0	A001	132.7	45.1	0	C084	90.9	15.9	22.6	C184	90.9	15.9	22.6
A001	132.7	45.1	0	A001	132.7	45.1	0	C085	90.9	15.9	22.6	C185	90.9	15.9	22.6
A001	132.7	45.1	0	A001	132.7	45.1	0	C086	90.9	15.9	22.6	C186	90.9	15.9	22.6
A001	132.7	45.1	0	A001	132.7	45.1	0	C087	90.9	15.9	22.6	C187	90.9	15.9	22.6
A001	132.														





# Project Location

This beautiful project is located in **Bahceli** in North Cyprus.



Pharmacy	2 mins	Korineum Golf Course	8 mins
Supermarket	2 mins	5 Star Hotels and Casino	10 mins
Beach Club	2 mins	Kyrenia Town Centre	30 mins
Eagle's Nest Restaurant	5 mins	Ercan Airport	35 mins
Cafes and Restaurants	5 mins	Larnaca Airport	65 mins





# About the Project

Sunsets over the Mediterranean Sea!

Welcome home to Sunset Bay where your dream lifestyle awaits. Nestled on a secret beach on the edge of the Mediterranean in Bahceli, Northern Cyprus this deluxe living complex is sure to impress! With luxurious four-bedroom villas, two-bedroom semi-detached villas and one-bed apartments serviced by private or shared swimming pools you're spoilt for choice.

Beautifully appointed these modern architecturally stunning homes make the perfect permanent, holiday or investment property in an enviable location close to Bahceli Marina, the Korineum Golf Course in Esentepe and surrounded by pristine nature reserves.

The internationally acclaimed homes feature sleek contemporary interior design with warm neutral styling, each with cleverly designed layouts, quality appliances and inviting views over sparkling pools, landscaped gardens and stunning natural views. You'll love the light-filled spaces and living areas that flow out to white terraces where you can relax and exhale!

Live a village lifestyle in a multicultural community with residents' facilities including a full gym and sports field, indoor and outdoor pools, a day spa and a wellness center.

Steeped in ancient history and you can explore the old towns of Cyprus with a fantastic climate with 300 days of sunshine. Enjoy magnificent beaches and explore the miles of unspoilt coastline and then come home to your own slice of heaven.

This luxurious homes are available for inspection now. Don't delay make an enquiry today!

# Two Bedroom Townhouses with Pools in Bahceli

Construction Status

April 2025



March 2025





# Payment Plan For This Property Type

## Property Info

Type	No
2 Bedroom Semi-detached Villa	201
Block	Floor
E	0
Interior	Balcony Terrace
93.00 m <sup>2</sup>	24.00 m <sup>2</sup>
Rooftop	Total Living Space
24.00 m <sup>2</sup>	141.00 m <sup>2</sup>
Plot	Private Pool
175.00 m <sup>2</sup>	25.00 m <sup>2</sup>



# Payment Plan For This Property Type

## Payment Plan

Current Date	Start Date	Delivery Date	Price	Initial Payment Amount
May 2025	March 2022	June 2025	£305,000	£183,000 <div>60%</div>

40% Payment plan remaining after delivery

June 2025	£1,453	October 2027	£1,453	February 2030	£1,453
July 2025	£1,453	November 2027	£1,453	March 2030	£1,453
August 2025	£1,453	December 2027	£1,453	April 2030	£1,453
September 2025	£1,453	January 2028	£1,453	May 2030	£1,453
October 2025	£1,453	February 2028	£1,453	June 2030	£1,453
November 2025	£1,453	March 2028	£1,453	July 2030	£1,453
December 2025	£1,453	April 2028	£1,453	August 2030	£1,453
January 2026	£1,453	May 2028	£1,453	September 2030	£1,453
February 2026	£1,453	June 2028	£1,453	October 2030	£1,453
March 2026	£1,453	July 2028	£1,453	November 2030	£1,453
April 2026	£1,453	August 2028	£1,453	December 2030	£1,453
May 2026	£1,453	September 2028	£1,453	January 2031	£1,453
June 2026	£1,453	October 2028	£1,453	February 2031	£1,453
July 2026	£1,453	November 2028	£1,453	March 2031	£1,453
August 2026	£1,453	December 2028	£1,453	April 2031	£1,453
September 2026	£1,453	January 2029	£1,453	May 2031	£1,453
October 2026	£1,453	February 2029	£1,453	June 2031	£1,453
November 2026	£1,453	March 2029	£1,453	July 2031	£1,453
December 2026	£1,453	April 2029	£1,453	August 2031	£1,453
January 2027	£1,453	May 2029	£1,453	September 2031	£1,453
February 2027	£1,453	June 2029	£1,453	October 2031	£1,453
March 2027	£1,453	July 2029	£1,453	November 2031	£1,453
April 2027	£1,453	August 2029	£1,453	December 2031	£1,453
May 2027	£1,453	September 2029	£1,453	January 2032	£1,453
June 2027	£1,453	October 2029	£1,453	February 2032	£1,453
July 2027	£1,453	November 2029	£1,453	March 2032	£1,453
August 2027	£1,453	December 2029	£1,453	April 2032	£1,453
September 2027	£1,453	January 2030	£1,453	May 2032	£1,401