



# Iskele Long Beach Four Bedroom Apartment

Long Beach, Iskele Long Beach, North Cyprus

- Property Ref: 248
- Only 5 minutes walk to the beach
- The tall towers have an unobstructed view of the Mediterranean sea
- The project will have many unit types to choose from including studio, one-bedroom, two-bedroom and three-bedroom options
- Close to all necessities, including supermarkets and pharmacies
- Our SPA will take you to a rejuvenating and healing journey

**£495,000**



238 m<sup>2</sup>



4 Bedrooms



3 Bathrooms



45 Months  
Instalments

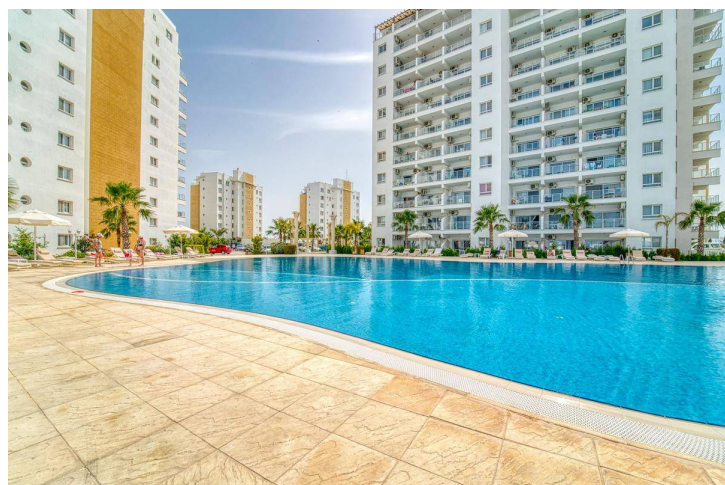


February 2024 -  
March 2027  
Completion



# Iskele Long Beach Four Bedroom Apartment

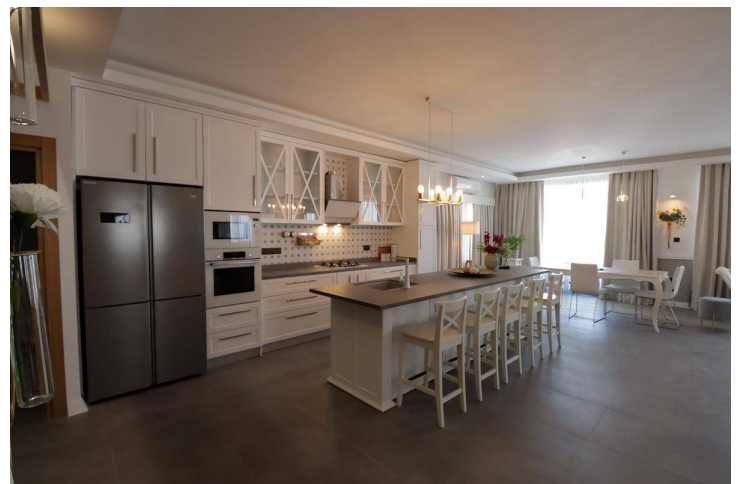
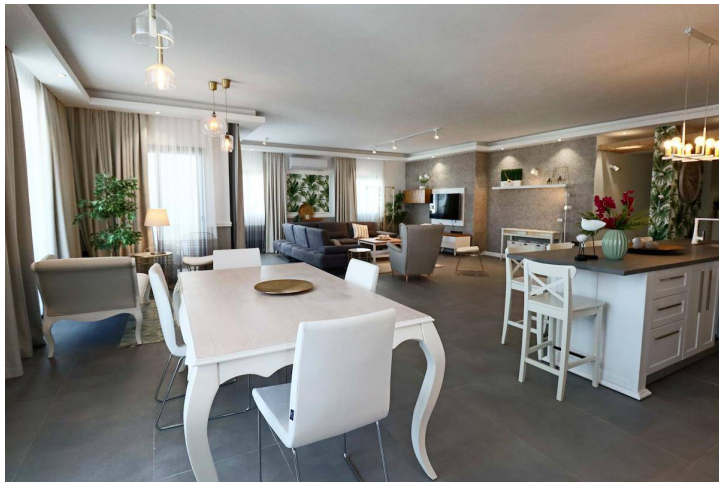
## Exterior Images





# Iskele Long Beach Four Bedroom Apartment

## Interior Images



# Iskele Long Beach Four Bedroom Apartment

## Floor Plan





# Facilities



Anti-aging



Aquapark



ATM



Bakery



Bar



Cafe



Car Rental



Central Generator System (Communal Areas)



Children's Playground



Concierge Service



Cycling Paths



Electric Car Charging



Fitness



Gardens (Landspaced)



Gated Community



Health Centre



Laundry



Lift



Market



Meeting/Conference Room



Mini Golf Course



Onsite Management



Parking



Pharmacy



Pool (Heated Indoor)



Pool (Outdoor)



Restaurant



Running Paths



# Facilities



Sauna



Shops



Shuttle Service



Spa



Steam Room



Tennis



Turkish Hammam



Water Sports (On-site)



Wellness



Yoga





# Site Plan

Long Beach, Iskele Long Beach, North Cyprus



# Project Location

This project is located in **Iskele, Long Beach**, in North Cyprus.



Bars and Clubs	1 min	Long Beach Beach Club	5 mins
Pharmacy	2 mins	Famagusta State Hospital	12 mins
Cafes and Restaurants	2 mins	Salamis Ancient City	13 mins
Supermarket	3 mins	Ercan Airport	45 mins
5 Star Hotel and Casino	5 mins	Larnaca Airport	65 mins





# About the Project

Indulge in the ultimate Mediterranean lifestyle with your own piece of paradise at this brand-new development, offering a range of studio, 1, 2 and 3-bedroom apartments with flawless presentation and exclusive amenities, located just 600 metres from stunning sandy beaches and crystal-clear waters.

With a pristine contemporary style, the apartments offer an effortless sense of ease and comfort with their soaring ceilings, gorgeous natural light and coastal colour palette. The elegant floorplan of each design provides endless space to stretch out and relax, with a fully-equipped kitchen, and a balcony perfect for enjoying morning coffee and evening wine, all while taking in the picturesque resort views.

The resort's amenities are absolutely unmatched, with beautifully landscaped grounds, multiple pools (including a heated indoor pool, tropical pool and aqua park), and an upcoming golf course. Multiple bars, cafes and restaurants provide premium dining experiences, and there are barbecue facilities ready for legendary grilling sessions.

Prioritise your health and wellness with the resort's deluxe spa facilities, and put in a rewarding workout at the fully-equipped gym and sports grounds, with class experiences, HYFIT training and martial arts, before retiring to the luxury hammam & sauna.

Located just 45 minutes from Ercan and Larnaca Airports, getting to your coastal home has never been easier. For a taste of local charm, you can take a stroll through the nearby scenic fishing village of Bogaz, wander around the marina, and dine at the restaurants – the perfect way to unwind and soak up the Mediterranean vibe.

# Iskele Long Beach Four Bedroom Apartment

Construction Status

April 2025



March 2025





# Payment Plan For This Property Type

## Property Info

Type	No
4 Bedroom Apartment	R2-11-P-2
Block	Floor
Seneca	11
Interior	Balcony Terrace
198.00 m <sup>2</sup>	40.00 m <sup>2</sup>
Total Living Space	
238.00 m <sup>2</sup>	



# Payment Plan For This Property Type

## Payment Plan

Current Date	Start Date	Delivery Date	Price	Initial Payment Amount
May 2025	August 2023	August 2025	£495,000	£148,500 <span>30%</span>

25% of the installment payment plan

1. Installment June 2025	£41,250
2. Installment July 2025	£41,250
3. Installment August 2025	£41,250





# Payment Plan For This Property Type

## Payment Plan

**45%** Payment plan remaining after delivery

1. Installment September 2025	£4,641	25. Installment September 2027	£4,641
2. Installment October 2025	£4,641	26. Installment October 2027	£4,641
3. Installment November 2025	£4,641	27. Installment November 2027	£4,641
4. Installment December 2025	£4,641	28. Installment December 2027	£4,641
5. Installment January 2026	£4,641	29. Installment January 2028	£4,641
6. Installment February 2026	£4,641	30. Installment February 2028	£4,641
7. Installment March 2026	£4,641	31. Installment March 2028	£4,641
8. Installment April 2026	£4,641	32. Installment April 2028	£4,641
9. Installment May 2026	£4,641	33. Installment May 2028	£4,641
10. Installment June 2026	£4,641	34. Installment June 2028	£4,641
11. Installment July 2026	£4,641	35. Installment July 2028	£4,641
12. Installment August 2026	£4,641	36. Installment August 2028	£4,641
13. Installment September 2026	£4,641	37. Installment September 2028	£4,641
14. Installment October 2026	£4,641	38. Installment October 2028	£4,641
15. Installment November 2026	£4,641	39. Installment November 2028	£4,641
16. Installment December 2026	£4,641	40. Installment December 2028	£4,641
17. Installment January 2027	£4,641	41. Installment January 2029	£4,641
18. Installment February 2027	£4,641	42. Installment February 2029	£4,641
19. Installment March 2027	£4,641	43. Installment March 2029	£4,641
20. Installment April 2027	£4,641	44. Installment April 2029	£4,641
21. Installment May 2027	£4,641	45. Installment May 2029	£4,641
22. Installment June 2027	£4,641	46. Installment June 2029	£4,641
23. Installment July 2027	£4,641	47. Installment July 2029	£4,641
24. Installment August 2027	£4,641	48. Installment August 2029	£4,623

