



Two Bedroom Apartment in Esentepe

Esentepe, Kyrenia East, North Cyprus

- Property Ref: 411
- Hotel services and facilities
- Gated community
- Stunning views of the sea and mountains
- Modern design and high quality construction
- Flexible payment plan

£299,875



60 m² to 112 m²



2 Bedrooms



2 Bathrooms



22 Months
Instalments



October 2026 -
April 2027
Completion



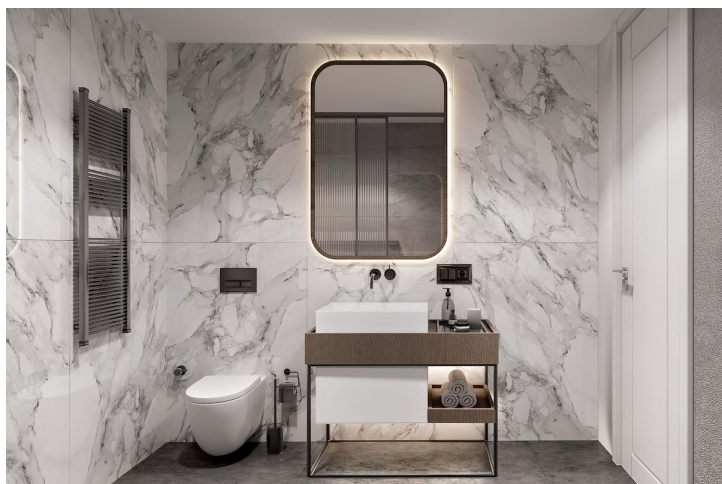
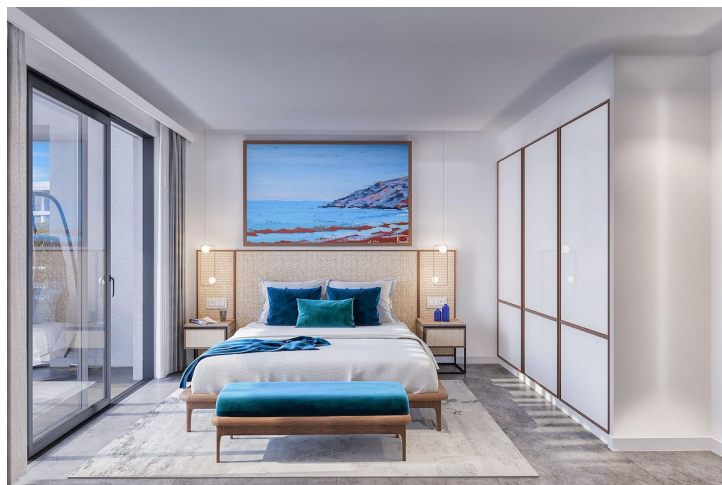
Two Bedroom Apartment in Esentepe

Exterior Images



Two Bedroom Apartment in Esentepe

Interior Images



Two Bedroom Apartment in Esentepe

Floor Plan



Facilities



Anti-aging



Aquapark



Bar



Cafe



Central Generator
System (Communal
Areas)



Central Generator
System (Homes)



Children's Playground



Concierge Service



Fitness



Gardens (Landspaced)



Gated Community



Laundry



Onsite Management



Parking



Pool (Outdoor)



Restaurant



Shuttle Service

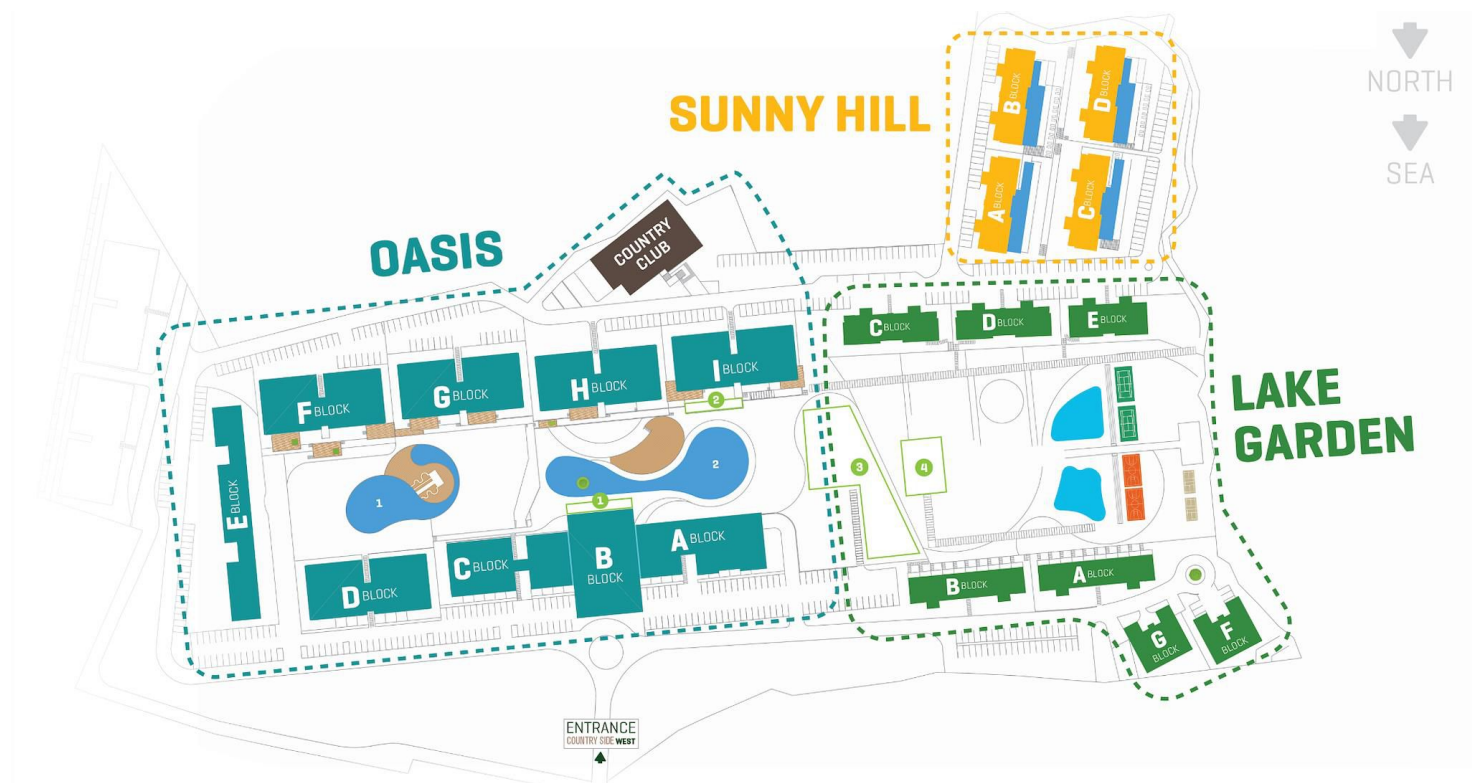


Tennis



Site Plan

Esentepe, Kyrenia East, North Cyprus



Project Location

The project is located in the picturesque area of Esentepe between the sea and the mountains.



Restaurant and Bars	1 min	Korineum Golf Club	5 mins
Beach	2 mins	Kyrenia	15 mins
Supermarket	2 mins	Ercan Airport	40 mins
Pharmacy	2 mins	Famagusta	45 mins
Fitness and Spa Center	3 mins	Larnaca Airport	70 mins



About the Project

This remarkable project comprising 522 units ranging from studios to 1 2 and 3 bedroom apartments. Embraced by picturesque natural surroundings, this spacious haven offers an introverted living experience complemented by top notch hotel services and facilities. With a focus on family and social lifestyles, the project boasts an array of cafes, restaurants, and sports and children's facilities.

Gated Community

Security 7/24 CCTV

Lobby - Reception

Cafe & Bar

Main Restaurant

Family Cafe

Family Pool

Main Pool

Basketball Courts

Tennis Courts

Beach Volleyball Courts

Skateboard Ramp

Gym

Business Center

In & Out Children's

Playground

SERVICES [Hotel Concept]

- Customer Service
- Room Service
- Housekeeping Service
- Transfers
- Shuttle Service
- Maintenance Services

Two Bedroom Apartment in Esentepe

Construction Status

April 2025



March 2025



Payment Plan For This Property Type

Property Info

Type

2 Bedroom Apartment

No

E21

Block

E

Interior

60.00 m²

Total Living Space

60.00 m²



Payment Plan For This Property Type

Payment Plan

Current Date	Start Date	Delivery Date	Price	Initial Payment Amount
May 2025	September 2024	April 2027	£299,875	£104,956 35%

65% of the installment payment plan

1. Installment June 2025	£8,860
2. Installment July 2025	£8,860
3. Installment August 2025	£8,860
4. Installment September 2025	£8,860
5. Installment October 2025	£8,860
6. Installment November 2025	£8,860
7. Installment December 2025	£8,860
8. Installment January 2026	£8,860
9. Installment February 2026	£8,860
10. Installment March 2026	£8,860
11. Installment April 2026	£8,860
12. Installment May 2026	£8,860
13. Installment June 2026	£8,860
14. Installment July 2026	£8,860
15. Installment August 2026	£8,860
16. Installment September 2026	£8,860
17. Installment October 2026	£8,860
18. Installment November 2026	£8,860
19. Installment December 2026	£8,860
20. Installment January 2027	£8,860
21. Installment February 2027	£8,860
22. Installment March 2027	£8,859

