



## One Bedroom Garden Apartment in Esentepe

Esentepe, Kyrenia East, North Cyprus

- Property Ref: 445
- Ready to move in.
- Only 250 meters to the sea.
- Mobile Phone App.
- The generator.

**£106,250**



52 m<sup>2</sup>



1 Bedroom



1 Bathroom



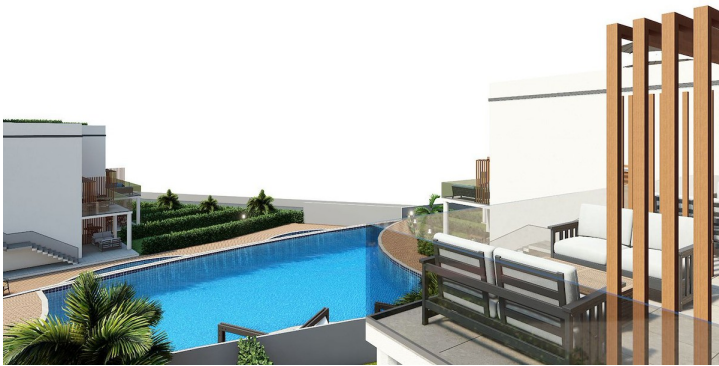
March 2025  
Completion





# One Bedroom Garden Apartment in Esentepe

## Exterior Images





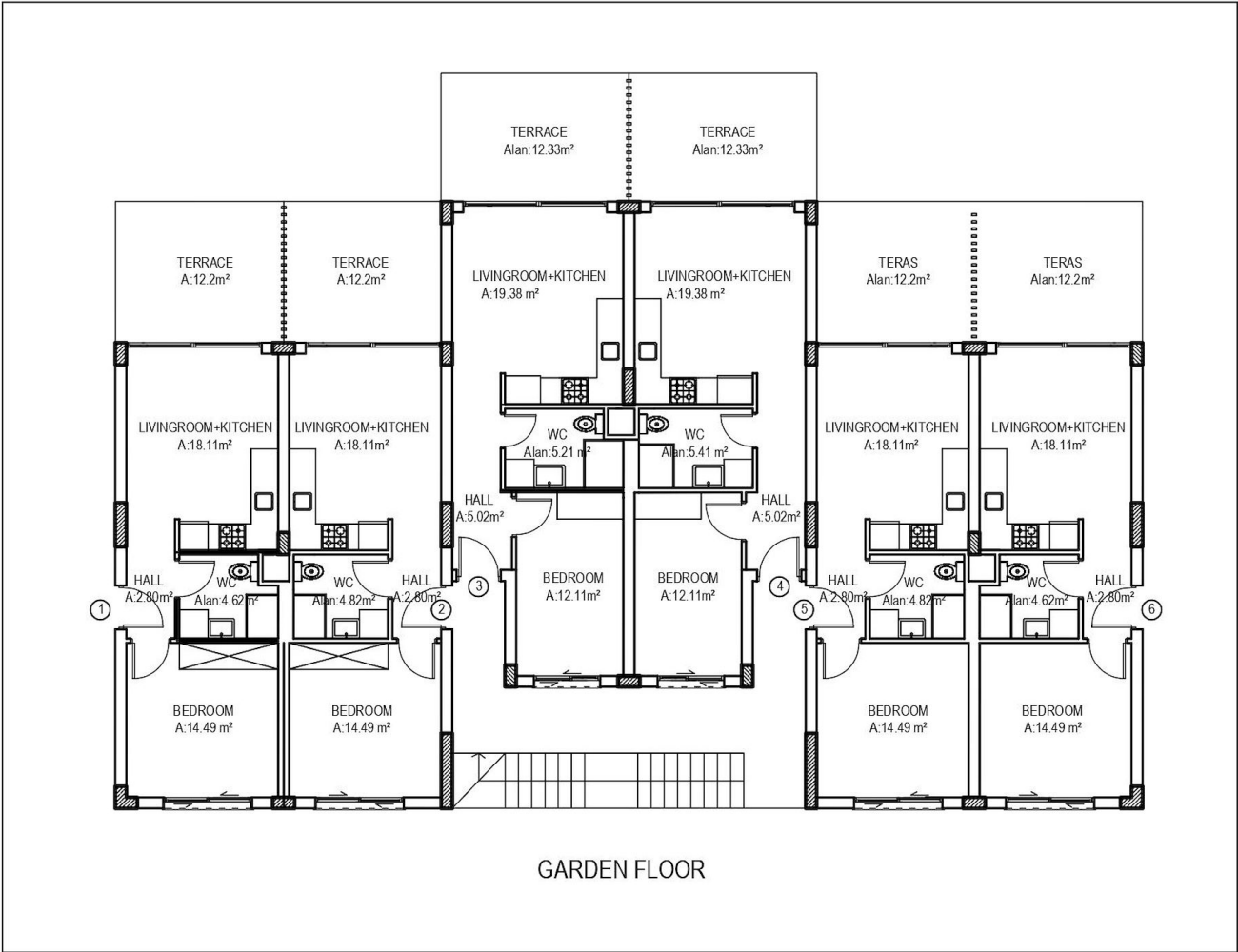
# One Bedroom Garden Apartment in Esentepe

## Interior Images



# One Bedroom Garden Apartment in Esentepe

## Floor Plan





# Facilities



Central Generator  
System (Communal  
Areas)



Central Generator  
System (Homes)



Fitness



Parking



Pool (Outdoor)



Yoga



# Site Plan

Esentepe, Kyrenia East, North Cyprus





# Project Location

The project is located in the Esentepe area, 250 meters from the sea.



Beach	1 min	Korineum Golf Club	6 mins
Beach Club	1 min	Kyrenia	20 mins
Supermarket	2 mins	Famagusta	40 mins
Restaurants and Bars	2 mins	Ercan Airport	40 mins
Pharmacy	5 mins	Larnaca Airport	65 mins



# About the Project

The complex consists of four two-storey blocks. There is a multi-levelled swimming pool, sauna, SPA and Fitness on site.

In apartments:

- Spacious balcony with a beautiful view
- Garden plot or roof terrace (depending on the floor)
- Ventilation in all bathrooms
- Fully equipped bathrooms
- Equipped kitchen with stone countertops
- Fitted wardrobes in each bedroom (with mirror)
- Double-glazed windows
- Interior doors
- Ceramic flooring and laminate flooring in the bedrooms
- Parking place
- Generator
- Ability to order a design package
- Interior doors

In March 2024, a phone application will start working, in which you can order all kinds of services, pay taxes and bills, manage your real estate and much more.





# One Bedroom Garden Apartment in Esentepe

Construction Status

April 2025



March 2025



# Payment Plan For This Property Type

## Property Info

Type
<b>1 Bedroom Garden Apartment</b>

No
<b>2</b>

Block
<b>A1</b>

Floor
<b>0</b>

Interior
<b>40.22 m<sup>2</sup></b>

Balcony Terrace
<b>12.20 m<sup>2</sup></b>

Total Living Space
<b>52.42 m<sup>2</sup></b>





# Payment Plan For This Property Type

## Payment Plan

Current Date	Start Date	Delivery Date	Price	Initial Payment Amount
May 2025	August 2022	March 2025	£106,250	£106,250 <div>100%</div>

