



# One Bedroom Duplex Penthouse on Long Beach

Long Beach, Iskele Long Beach, North Cyprus

- Property Ref: 590
- Private roof terrace.
- A low-rise residential complex. Low population density.
- Low cost per square meter. Apartments with a large area.
- High quality construction. Sound insulation and thermal insulation. Ventilation in bathrooms.
- Payment plan options are available.

**£160,000**



123 m<sup>2</sup> to 156 m<sup>2</sup>



1 Bedroom



2 Bathrooms



35 Months  
Instalments



October 2026  
Completion





# One Bedroom Duplex Penthouse on Long Beach

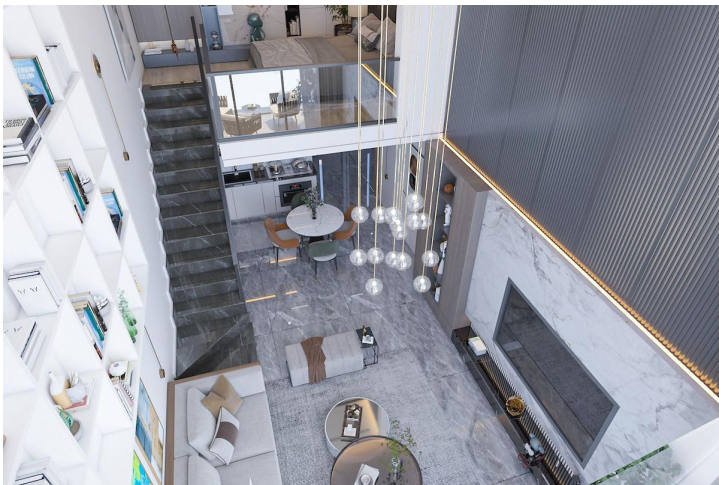
## Exterior Images





# One Bedroom Duplex Penthouse on Long Beach

## Interior Images



# One Bedroom Duplex Penthouse on Long Beach

## Floor Plan



1+1 DUPLEX FLOOR PLAN

ELYSIUM 2



# Facilities



Central Generator  
System (Communal  
Areas)



Central Generator  
System (Homes)



Children's Playground



Fitness



Gated Community



Onsite Management



Parking



Pool (Heated Indoor)



Pool (Outdoor)



Restaurant



Sauna



Shuttle Service



Tennis





# Site Plan

Long Beach, Iskele Long Beach, North Cyprus





# Project Location

The project is located in Iskele Long Beach, 600 meters away from the sea.



Forest	3 mins	Private School	12 mins
Restaurants and Bars	3 mins	Famagusta	15 mins
Supermarket	3 mins	Ercan Airport	55 mins
Pera Mackenzie Beach Club	5 mins	Larnaca Airport	55 mins
Hospital	9 mins	Nicosia	65 mins





# About the Project

This new residential complex in Iskele Long Beach located just 600 meters from the sea with its golden sandy beaches. This low-rise complex boasts a low population density, making it one of the few non-high-rise developments on Long Beach. Offering affordable prices per square meter, the spacious apartments feature large balconies and generous living areas.

Built to high-quality construction standards, the complex ensures excellent sound and thermal insulation. Residents can enjoy a diverse range of amenities, including swimming pools, a sauna, a gym, tennis courts, a shuttle service, generators, and more. Embrace a tranquil and luxurious lifestyle in this exclusive community near the beautiful coastline.





# One Bedroom Duplex Penthouse on Long Beach

Construction Status

April 2025



March 2025





# Payment Plan For This Property Type

## Property Info

Type
1 Bedroom Duplex Penthouse

No
32A

Block
G

Floor
1

Interior
65.00 m <sup>2</sup>

Balcony Terrace
13.00 m <sup>2</sup>

Rooftop
45.00 m <sup>2</sup>

Total Living Space
123.00 m <sup>2</sup>



# Payment Plan For This Property Type

## Payment Plan

Current Date	Start Date	Delivery Date	Price	Initial Payment Amount
May 2025	July 2024	October 2026	£160,000	£56,000 35%

33% of the installment payment plan

1. Installment June 2025	£3,106
2. Installment July 2025	£3,106
3. Installment August 2025	£3,106
4. Installment September 2025	£3,106
5. Installment October 2025	£3,106
6. Installment November 2025	£3,106
7. Installment December 2025	£3,106
8. Installment January 2026	£3,106
9. Installment February 2026	£3,106
10. Installment March 2026	£3,106
11. Installment April 2026	£3,106
12. Installment May 2026	£3,106
13. Installment June 2026	£3,106
14. Installment July 2026	£3,106
15. Installment August 2026	£3,106
16. Installment September 2026	£3,106
17. Installment October 2026	£3,106





# Payment Plan For This Property Type

## Payment Plan

**32%** Payment plan remaining after delivery

1. Installment November 2026	£2,845
2. Installment December 2026	£2,845
3. Installment January 2027	£2,845
4. Installment February 2027	£2,845
5. Installment March 2027	£2,845
6. Installment April 2027	£2,845
7. Installment May 2027	£2,845
8. Installment June 2027	£2,845
9. Installment July 2027	£2,845
10. Installment August 2027	£2,845
11. Installment September 2027	£2,845
12. Installment October 2027	£2,845
13. Installment November 2027	£2,845
14. Installment December 2027	£2,845
15. Installment January 2028	£2,845
16. Installment February 2028	£2,845
17. Installment March 2028	£2,845
18. Installment April 2028	£2,833

